

## Egg predation and vertebrates associated with wild crocodilian nests in Mexico determined using camera-traps

Giovany A. González-Desales , Luis A. Tello-Sahagún , Cynthia P. Cadena-Ramírez , Marco A. López-Luna , Alejandra Buenrostro-Silva , Jesús García-Grajales , Mariana C. González-Ramón , Jorge E. Morales-Mavil , Pierre Charruau , Luis Sigler , Armando Rubio-Delgado , Martha M. Zarco-González & Octavio Monroy-Vilchis

To cite this article: Giovany A. González-Desales , Luis A. Tello-Sahagún , Cynthia P. Cadena-Ramírez , Marco A. López-Luna , Alejandra Buenrostro-Silva , Jesús García-Grajales , Mariana C. González-Ramón , Jorge E. Morales-Mavil , Pierre Charruau , Luis Sigler , Armando Rubio-Delgado , Martha M. Zarco-González & Octavio Monroy-Vilchis (2020) Egg predation and vertebrates associated with wild crocodilian nests in Mexico determined using camera-traps, *Journal of Natural History*, 54:29-30, 1813-1826

To link to this article: <https://doi.org/10.1080/00222933.2020.1829723>



Published online: 11 Feb 2021.



Submit your article to this journal [↗](#)





View related articles [↗](#)



View Crossmark data [↗](#)



## Egg predation and vertebrates associated with wild crocodilian nests in Mexico determined using camera-traps

Giovany A. González-Desales<sup>a</sup>, Luis A. Tello-Sahagún<sup>b</sup>, Cynthia P. Cadena-Ramírez<sup>c</sup>, Marco A. López-Luna<sup>c,d</sup>, Alejandra Buenrosto-Silva<sup>e</sup>, Jesús García-Grajales<sup>e</sup>, Mariana C. González-Ramón<sup>d</sup>, Jorge E. Morales-Mavil<sup>c</sup>, Pierre Charruau<sup>f</sup>, Luis Sigler<sup>g</sup>, Armando Rubio-Delgado<sup>h</sup>, Martha M. Zarco-González <sup>a</sup> and Octavio Monroy-Vilchis <sup>a</sup>

<sup>a</sup>Centro de Investigación en Ciencias Biológicas Aplicadas, Universidad Autónoma del Estado de México, Toluca, México; <sup>b</sup>Cocodriliario San Juan-Majahuas, Tomatlán, México; <sup>c</sup>Instituto de Neuroetología, Universidad Veracruzana, Xalapa Enríquez, México; <sup>d</sup>División Académica de Ciencias Biológicas, Universidad Juárez Autónoma de Tabasco, Villahermosa, México; <sup>e</sup>Instituto de Industrias, Instituto de Recursos, Universidad del Mar-Puerto Escondido, San Pedro Mixtepec, México; <sup>f</sup>Centro del Cambio Global y la Sustentabilidad A.C, Villahermosa, México; <sup>g</sup>The Dallas World Aquarium, Dallas, TX, USA; <sup>h</sup>UMA Acuetzpollin, Puerto Vallarta, México

### ABSTRACT

Interactions between species and individuals can determine their survival in the wild. Most of the time these relationships are difficult to study in situ by direct observation. However, technology can help collect these data with minimal impact on animals' behaviour. Egg stage is certainly the most vulnerable life stage in crocodilians, but few studies have focused on animal species visiting crocodilian nests and associated egg predation. Herein, we use camera-traps in four Mexican states (Chiapas, Oaxaca, Jalisco, Tabasco) to determine vertebrate species and egg predators associated with wild nests of *Caiman crocodilus chiapasius*, *Crocodylus acutus* and *Crocodylus moreletii*. We recorded 72 species of vertebrates at nesting sites and obtained the first photographic evidence of crocodilian egg predation by *Caracara cheriway*, *Cuniculus paca*, *Didelphis virginiana* and *Procyon lotor*. We also identified commensalism, cooperation, and predation as types of interactions within observed nesting areas, which indicates the importance of crocodilian nesting areas for other wild vertebrates. Finally, we found that crocodilian egg predation depends on species richness present in the area of study, as well as crocodilian size.

### ARTICLE HISTORY

Received 13 May 2019

Accepted 23 September 2020

### KEYWORDS

Nest predation; ecological interactions; camera-traps; spectacled caiman; American crocodile; Morelet's crocodile

## Introduction

Predation is one of the interactions that occurs between at least two organisms of one or more species, where predators themselves can be prey at some stage of their life (Smith and Smith 2007; Del Val and Boege 2012). Adult crocodilians (Order Crocodylia) are opportunistic apex predators (Ritchie and Johnson 2009) which consume a diversity of vertebrate and invertebrate species (Casas-Andreu and Barrios 2003; Platt et al. 2006; Cupul-Magaña et al. 2015). However, at early life stages (i.e., eggs and neonates) they are

preyed upon by diverse vertebrate species (Cintra 1988; Campos 1993; Villamarín-Jurado and Suárez 2007; Somaweera et al. 2013; Campos and Mourão 2014, Campos et al. 2016; González-Desales et al. 2016a). The importance of crocodilians as a food source for wildlife has been extensively documented by Somaweera et al. (2013), who identified the trend that small crocodilians are more vulnerable to predators.

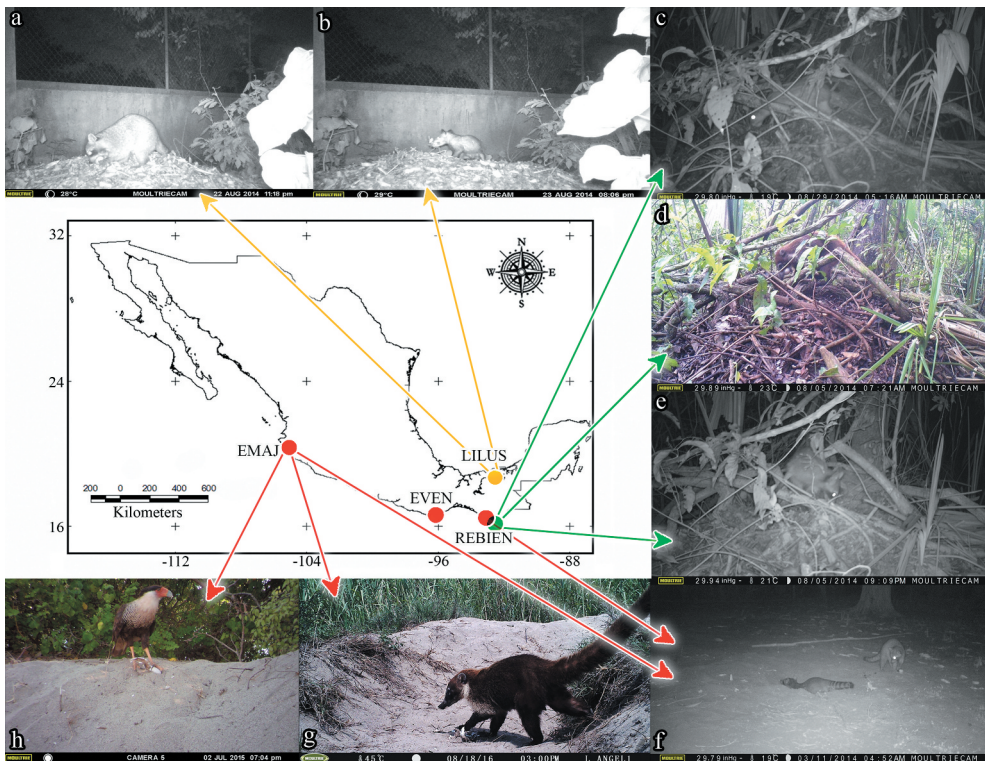
Little is known about the predators of crocodilians and their effect on populations at a local scale, and these types of antagonistic relationships are difficult to monitor directly in the wild. Camera-traps are frequently used to monitor fauna with minimal disturbance to the species, allowing researchers to record their presence and observe aspects of their behaviour and habitat use (Rowcliffe and Carbone 2008; Monroy-Vilchis et al. 2009; Rovero et al. 2010; Meek et al. 2014). Nevertheless, camera-traps have been used little to study Mexican crocodilians. The few studies that have been done have examined species richness at nesting sites, nest protection and maintenance by females, and egg scavenging in *Crocodylus acutus* Cuvier, 1807 (Charruau and Hénaut 2012; Platt et al. 2014), and no previous studies have used camera-traps to study *Crocodylus moreletii* Duméril and Bibron, 1851 or *Caiman crocodilus chiapasius* Bocourt 1876.

In Mexico, additional interactions between crocodilians and wildlife or humans should be considered for evaluation in species' monitoring manuals (Sánchez-Herrera et al. 2011) and ranching protocols (Barrios and Cremieux 2018) for wild populations of *Crocodylus moreletii*, due to the implications that result from the modification of ecological interactions. For example, crocodiles develop strategies to adapt to anthropogenically modified environments (nests built with human waste material; López-Luna et al. 2011) and also to avoid human presence (abandonment of nesting areas; Casas-Andreu 2003). As such, a negative effect would be expected in the loss of nests by predation in more anthropogenically modified environments, or by exotic or domestic fauna, as has been reported in other crocodilians (Merchant et al. 2014; Campos and Mourão 2014). Additionally, as in other taxonomic groups, the loss and fragmentation of habitat has led to negative interactions between wildlife and humans (Zarco-González et al. 2013; Carrera-Treviño et al. 2018).

Considering a few information on vertebrate interactions at nesting sites of Mexican crocodilians, in this study we monitored wild nests of the three crocodilians present in Mexico using camera-traps to identify vertebrate species and their interactions associated with crocodile nests. Specifically, we examined egg predation and analysed if the number of egg predators increase with the number of species recorded at nests. In addition, we reviewed the scientific literature on the use of trap cameras in the monitoring of crocodilian nests worldwide to identify known vertebrate crocodilian egg predators, and to determine if the size of crocodilians has an effect on the number of nests predated.

## Materials and methods

For direct observation of vertebrates associated with nests, camera-traps were set up at crocodilian nesting locations in three sites along the Mexican Pacific coast and in the Gulf of Mexico (Figure 1): Reserva de la Biosfera La Encrucijada (REBIEN) in Chiapas state, Estero La Ventanilla (EVEN) in Oaxaca state, Estero Majahuas (EMAJ) in Jalisco state, and Reserva Ecológica Estatal Laguna de las Ilusiones (LILUS) in Tabasco state. For additional details of these study sites see García (1988), González-Desales et al. (2016a), López-Luna et al.



**Figure 1.** Geographical location of the study areas and photographic records of eggs predation. *Procyon lotor* (a, e, f), *Didelphis virginiana* (b), *Cuniculus paca* (c), *Nasua narica* (d, g), and *Caracara cheriway* (h).

(2011), SEMARNAT-CONANP (s/f). Table 1 shows the distribution, model and programming of camera-traps, the studied species, number observed nests and the duration of observation among the study areas.

We screened each photograph obtained by the camera-traps, and identified each individual to species using specialised literature (Howell and Webb 1995; National Geographic Society 2002; Ceballos and Oliva 2005) and personal experience of the authors. To identify the interactions in accordance with the activities carried out by the species in photographic records, we followed the proposal of Sutton and Harmon (2007), considering the benefit (+), effect (-) or no effect (0), towards crocodilians: 1- Cooperation (+/+), 2- Mutualism (+/+), 3- Commensalism (+/0), 4- Amensalism (-/0), 5- Competition (-/-), 6- Predation ( $\pm$ ), and 7- Parasitism ( $\pm$ ). We then obtained the percentage of the activity carried out by the species in each type of interaction. Additionally, we identified the presence or absence of fishermen, tourists, exotic or domestic fauna at each site.

We analysed the relationship between the number of egg predator species (dependent variable) and the richness of vertebrates identified per area (independent variable) using a nonlinear regression. For this analysis we included data from Parque Ecológico Punta Sur (PEPS) and Reserva de la Biósfera Banco Chinchorro (REBIBC) from Hénaut and Charruau (2012) and Platt et al. (2014). Those authors used camera-traps to study nesting

**Table 1.** Study areas, crocodylian species, season and number of nests monitored, and configuration of camera-traps in the present study.

Study areas	Observed species	Nesting season (year)	Camera-traps (number equipment's)	Number of observed nests	Programming of camera-traps
REBIEN	<i>Caiman crocodilus chiapasius</i>	Jul-Sep (2014)	Moultrie MCG-M990i (5) HCO ScoutGuard SG550 (2)	5	3 photographs per event
	<i>Crocodylus acutus</i>	Mar-May (2014)	Moultrie MCG-M990i (3) HCO ScoutGuard SG550 (2) HCO ScoutGuard SG860C (2)	13	3 photographs per event
EVEN	<i>Crocodylus acutus</i>	Mar-Jun (2011)	Moultrie 150 (6)	6	1 photograph per event
EMAJ	<i>Crocodylus acutus</i>	Jun-Ago (2012)	Moultrie DGS-I35 (2)	3	1 photograph per event
		Jun-Ago (2013)	Moultrie DGS-I35 (3)	5	1 photograph per event
		Jun-Ago (2014)	Moultrie DGS-I35 (3)	5	1 photograph per event
		Jun-Ago (2015)	Moultrie A-5 (2) Moultrie DGS-I35 (2)	5	1 photograph per event
		Jun-Ago (2016)	Moultrie DGS-I35 (5)	3	1 photograph per event
LILUS	<i>Crocodylus moreletii</i>	Jun-Ago (2015)	Moultrie MCG12590 (5) Bushnell TrophyCam 119,436 (6)	9	3 photographs and 10 seconds video per event

behaviour of *C. acutus* females and obtained data on species visiting their nests in a similar fashion to this study.

In addition, we obtained the number of nests lost by predation in other crocodylians from the scientific literature, searched in Google Scholar using the following keywords: camera-traps and crocodylians, eggs predation, nests predators, photographic records and nests, monitoring of the crocodylians with camera-traps, crocodylian predators. We only consider those scientific reports with egg predators identified by camera-traps. We evaluated the relationship between percentage of preyed upon nests and crocodylian maximum size, through a nonlinear regression analysis, considering the percentage of preyed upon nests as a dependent variable. The maximum size of these crocodylian species was obtained from the Crocodile Specialist Group website (<http://www.iucnscg.org/pages/Crocodylian-Species.html>). All statistical analyses were performed with Statgraphics Centurion 16.1 and results were considered significant at  $p$ -values < 0.05.

## Results

Nests of *Caiman crocodilus chiapasius* were only recorded at REBIEN, where 1,882 photographic records were obtained in which 11 vertebrate species were identified: six mammalian, four avian, and one reptilian species (Table 2). Only three species were recorded preying on eggs: lowland paca (*Cuniculus paca*), white-nosed coati (*Nasua narica*) and northern raccoon (*Procyon lotor*) (Figure 1). No photographic records were obtained of exotic fauna or humans. All five monitored nests were preyed upon.

Nests of *Crocodylus acutus* were observed at REBIEN, EVEN, and EMAJ. For this species at REBIEN, 4,612 photographic records were obtained showing 20 vertebrate species: 11

**Table 2.** Vertebrates found associated with wild nests of the Crocodylia in Mexico in the present study and included in previous reports (\* = Hénaut and Charruau 2012; + = Platt et al. 2014).

Crocodylian	Site	Class	Species	Activity		
<i>Caiman crocodilus chiapasius</i>	REBIEN	Reptilia	<i>Iguana iguana</i>	Transit		
		Aves	<i>Amazilia rutila</i>	Transit		
			<i>Aramides cajaneus</i>	Transit		
			<i>Cyanocorax yncas</i>	Transit		
			<i>Tigrisoma mexicanum</i>	Transit		
		Mammalia	<i>Cuniculus paca</i>	Predation		
			<i>Dasypus novemcinctus</i>	Transit		
			<i>Nasua narica</i>	Predation/Transit		
			<i>Philander opossum</i>	Transit		
			<i>Potos flavus</i>	Transit		
			<i>Procyon lotor</i>	Predation		
		<i>Crocodylus acutus</i>	EVEN	Reptilia	<i>Iguana iguana</i>	Basking/Nesting
				Aves	<i>Ardea alba</i>	Transit
					<i>Bubulcus ibis</i>	Transit
					<i>Calocitta formosa</i>	Transit
	<i>Ortalis sp.</i>			Transit		
	<i>Quiscalus mexicanus</i>			Transit		
	<i>Tyrannus melancholicus</i>			Transit		
Mammalia	<i>Nasua narica</i>			Transit		
	<i>Procyon lotor</i>			Transit		
EMAJ	Amphibia			<i>Rhynella horribilis</i>	Basking/Transit	
	Reptilia			<i>Aspidozelis communis</i>	Basking/Transit	
				<i>Aspidozelis lineatissima</i>	Basking/Transit	
				<i>Ctenosaura pectinata</i>	Basking/Transit	
				<i>Holcosus undulates</i>	Transit	
				<i>Iguana iguana</i>	Basking/Transit	
		<i>Loxocemus bicolor</i>	Transit			
	Aves	<i>Caracara cheriway</i>	Predation			
		<i>Columbina flavirostris</i>	Sand Bath			
		<i>Egretta caerulea</i>	Transit			
		<i>Eudocimus albus</i>	Transit			
		<i>Megarynchus pitangua</i>	Sand Bath			
		<i>Morococcyx erythropygus</i>	Transit			
		<i>Myiarchus tuberculifer</i>	Sand Bath			
		<i>Nyctanassa violacea</i>	Basking/Transit			
	<i>Ortalis poliocephala</i>	Sand Bath/Transit				
	<i>Plegadis chihi</i>	Transit				
	<i>Tigrisoma mexicanum</i>	Transit				
	<i>Tyrannus melancholicus</i>	Transit				
	<i>Tyrannus vociferans</i>	Sand Bath				
	<i>Zenaida asiatica</i>	Transit				
	<i>Zenaida macroura</i>	Transit				
Mammalia	<i>Baiomys taylori</i>	Transit				
	<i>Dasypus novemcinctus</i>	Transit				
	<i>Didelphis virginiana</i>	Transit				
	<i>Leopardus wiedii</i>	Transit				
	<i>Nasua narica</i>	Predation/transit				
	<i>Oryzomys melanotis</i>	Transit				
	<i>Procyon lotor</i>	Predation/transit				
	<i>Puma yagouaroundi</i>	Transit				
PEPS*	Amphibia	Unidentified				
	Reptilia	<i>Aspidozelis cozumela</i>				
		<i>Ctenosaura similis</i>				
		<i>Iguana iguana</i>				
	Aves	<i>Aramides cajanea</i>				
		<i>Cathartes aura</i>	Predation <sup>+</sup>			
		<i>Coragyps atratus</i>	Predation <sup>+</sup>			
		<i>Leptotila jamaicensis</i>				
		<i>Mimus gilvus</i>				
		<i>Nyctanassa violacea</i>				
		<i>Quiscalus mexicanus</i>				
	Mammalia	<i>Procyon pygmaeus</i>				

(Continued)

**Table 2.** (Continued).

Crocodilian	Site	Class	Species	Activity
<i>Crocodylus moreletii</i>	REBIBC*	Reptilia	<i>Anolis allisoni</i>	
			<i>Aspidoscelis cozumela</i>	
			<i>Ctenosaura similis</i>	
			<i>Iguana iguana</i>	
			<i>Norops sagrei</i>	
		Aves	<i>Columba leucocephata</i>	
			<i>Myiarchus tyrannulus</i>	
			<i>Nyctanassa violacea</i>	
			<i>Quiscalus mexicanus</i>	
			<i>Seiurus aurocapilla</i>	
	REBIEN	Reptilia	<i>Ctenosaura similis</i>	Basking/transit
			<i>Iguana iguana</i>	Basking/transit
		Aves	<i>Aramides cajanea</i>	Transit
			<i>Buteogallus anthracinus</i>	Transit
			<i>Calocitta formosa</i>	Feeding/transit
			<i>Coragyps atratus</i>	Transit
			<i>Dryocopus lineatus</i>	Transit
			<i>Icteus sp.</i>	Transit
			<i>Leptotila verreauxi</i>	Transit
			<i>Nyctanassa violacea</i>	Transit
			<i>Ortalis leucogastra</i>	Sand Bath/Transit
			<i>Quiscalus mexicanus</i>	Transit
		<i>Tigrisoma mexicanum</i>	Transit	
		Mammalia	<i>Cuniculus paca</i>	Transit
			<i>Didelphis virginiana</i>	Transit
			<i>Nasua narica</i>	Transit
			<i>Peromyscus mexicanus</i>	Transit
<i>Philander opossum</i>	Transit			
		<i>Procyon lotor</i>	Predation	
		<i>Sciurus variegatoides</i>	Transit	
LILUS	Amphibia	<i>Rhinella horribilis</i>	Transit	
	Reptilia	<i>Basiliscus vittatus</i>	Basking/Vigilance/Transit	
		<i>Crocodylus moreletii</i>	Transit	
		<i>Ctenosaura similis</i>	Basking	
		<i>Iguana iguana</i>	Transit/Basking	
	Aves	<i>Ardea alba</i>	Transit/Feeding	
		<i>Bubulcus ibis</i>	Transit/Feeding/Materials Extraction	
		<i>Butorides virescens</i>	Transit	
		<i>Crotophaga surcirostris</i>	Transit/Feeding	
		<i>Egretta thula</i>	Transit/Feeding/Materials Extraction	
		<i>Icterus gularis</i>	Transit	
		<i>Melanerpes aurifrons</i>	Transit/Feeding	
		<i>Pitangus sulphuratus</i>	Transit/Feeding	
		<i>Quiscalus mexicanus</i>	Transit/Feeding	
		<i>Turdus grayi</i>	Transit/Feeding	
		<i>Zenaida asiatica</i>	Transit	
		Mammalia	<i>Didelphis marsupialis</i>	Transit/Feeding
			<i>Didelphis virginiana</i>	Predation
<i>Procyon lotor</i>	Transit/Feeding/Predation			
<i>Sciurus melanogaster</i>	Transit			

mammalian, seven avian, and two reptilian species (Table 2). Photographic records of fishermen, tourists and domestic dog (*Canis lupus familiaris*) were also obtained (Table 3). Two of the thirteen monitored nests were preyed upon by *Procyon lotor* (Figure 1). With respect to EVEN, nine species of vertebrates were identified from 756 photographic records: two mammalian, six avian, and one reptilian (Table 2). We also recorded humans and domestic horse (*Equus caballus*) walking over some of the nests (Table 3). At EMAJ, 30 vertebrate species were identified from 12,949 photographic records: eight mammalian,

**Table 3.** Number of species identified, egg predators, domestic fauna and human presence at wild nests of Mexican crocodilians.

Site	Fauna	Predators	Domestic Fauna	Fishermen/ Tourists	Source
EMAJ	30	3		Present	Present study
REBIEN	25	3	<i>Canis lupus familiaris</i>	Present	Present study
PEPS	12	2		Present	Hénaut and Charruau (2012); Platt et al. (2014)
REBIBC	10		<i>Felis catus</i> <i>Rattus rattus</i>	Present	Hénaut and Charruau (2012)
EVEN	9	1	<i>Equus caballus</i>	Present	Present study; García-Grajales and Buenrostro-Silva (2015)
LILUS	20	2	<i>Felis catus</i> <i>Rattus norvegicus</i>	Present	Present study

15 avian, six reptilian, and one amphibian species (Table 2). Of these 30 identified species, *Nasua narica*, *Procyon lotor* and crested caracara (*Caracara cheriway*) preyed on crocodilian eggs (Figure 1).

Nests of *Crocodylus moreletii* were only recorded at LILUS, where 33,509 photographic records and 157 videos were obtained, from which 20 vertebrate species were identified: four mammalian, 11 avian, four reptilian, and one amphibian species (Table 2). Humans were also recorded in this area (Table 3). *Procyon lotor* and virginia opossum (*Didelphis virginiana*) preyed upon eggs of two monitored nests (Figure 1).

Overall, our study identified 72 vertebrate species at the monitored crocodilian nesting sites in Mexico, obtained from 53,865 photographic and video records. However, only five of these species preyed on eggs: *Caracara cheriway*, *Cuniculus paca*, *Didelphis virginiana*, *Nasua narica*, and *Procyon lotor* (Figure 1). The common green iguana (*Iguana iguana*) and *Procyon lotor* were the only two species recorded at all nesting sites (Table 2). From seven activities, we identify three types of interactions: a) Cooperation (free transit of the species = 65.8%), b) Commensalism (basking sites = 10%, feeding sites without predation of crocodilian eggs = 9.1%, dust bathing = 5%, extraction of plant matter = 1.6%, and vigilance sites = 0.8%), and c) Predation (predation of crocodilian eggs = 7.5%).

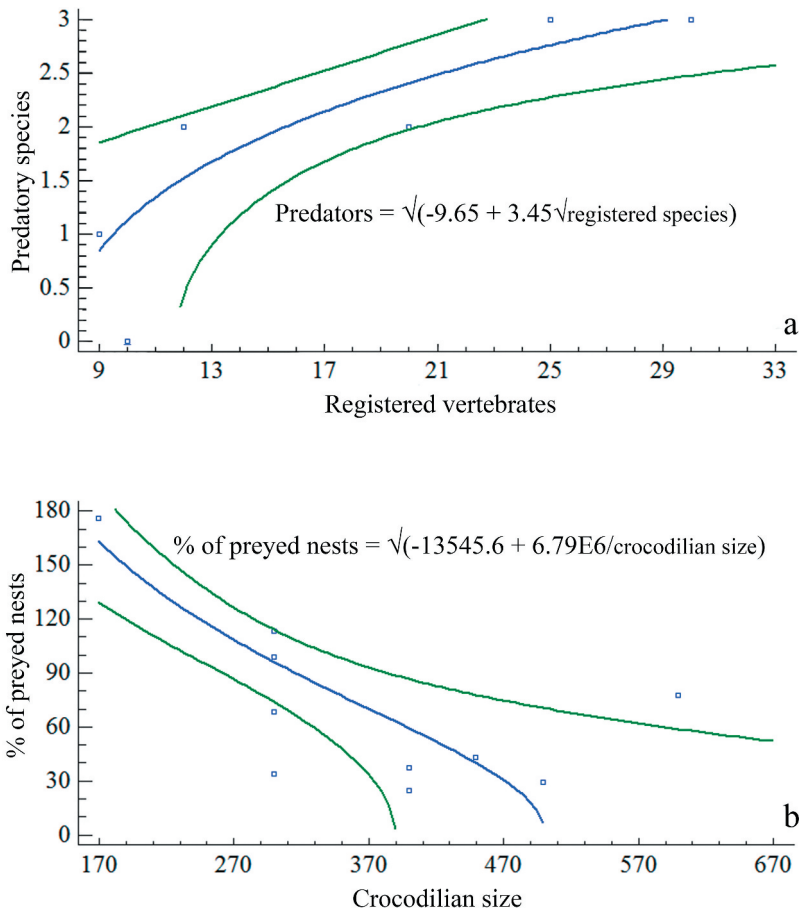
There was a relationship between the number of vertebrate species recorded at nests (Table 3) and the number of egg predators ( $r^2 = 86.74$ ;  $p < 0.05$ ), adjusting to the regression model: Y-square and square root-X (Figure 2(a)).

Our literature review identified 12 scientific publications that used camera-traps as a method of monitoring crocodilian nests published between 1982 and 2017, evaluating egg predation in 10 crocodilian species (Table 4). Predators corresponded with wildlife species in all crocodilian nests monitored. A relationship was also observed between the percentage of nests preyed upon (Table 4) and crocodilian size ( $r^2 = 75.04$ ;  $p < 0.05$ ), adjusting to the regression model: Y-square and X-inverse (Figure 2(b)).

## Discussion

Camera-traps have been shown as a useful tool for in situ observations of crocodilian nesting sites. For the south Pacific coast (Chiapas, Mexico), a previous study reported that 5.9% of *C. acutus* nests were lost by predation, but the predator was not mentioned (González-Desales et al. 2016a). Similarly, in the case of *C. c. chiapasius* in a region of the





**Figure 2.** Non-linear regression models: (a)- Predator species increase with the number of vertebrates recorded in the areas of study. (b)- The number of nests lost decreases as crocodilian size increases.

Chiapas coast, it has been reported that egg predation occurs, with losses of 47.4% without identifying the predator (González-Desales et al. 2016b). While in another region of the same coast (Oaxaca, Mexico), it was identified that *Procyon lotor* preyed on *C. acutus* eggs (García-Grajales and Buenrostro-Silva 2015), prior to this study, there were only photographic records of egg scavenging by *Coragyps atratus* and *Cathartes aura* for Mexican crocodilians (Platt et al. 2014).

Using camera-traps, this study identified 72 vertebrate species that had some type of relationship with crocodilian nests in Mexico. Of these species, five preyed on nests: three on *C. c. chiapasius*, three on *C. acutus*, and two on *C. moreletii*. Eggs were mainly preyed upon by mammalian mesocarnivores, and *Procyon lotor* was recorded preying on eggs of all three Mexican crocodilians. Previously, this species had only been recorded with camera-traps preying on the eggs of *Alligator mississippiensis* (Hunt and Ogden 1991; Merchant et al. 2014). *Nasua narica* and *Cuniculus paca* were reported for the first time as predators of Mexican crocodilians through photographic records in the present study. The different egg predators between areas can be attributed to the fact that ecosystem

**Table 4.** Number of nests affected by predation (wild and exotic fauna, as well as by humans) of crocodylians on a global level identified through photographic records.

Crocodylia	Predator	Nests Affected	Authors
<i>Alligator mississippiensis</i>	<i>Oryzomys palustris</i>	1(15)	Hunt and Odgen (1991)
	<i>Procyon lotor</i>	-(62)	Merchant et al. (2014)
	<i>Procyon lotor</i>	3(15)	Hunt and Odgen (1991)
	<i>Sus scrofa</i>	-(62)	Merchant et al. (2014)
	<i>Tupinambis merianae</i>	1(1)	Mazzotti et al. (2015)
	<i>Ursus americanus</i>	11(15)	Hunt and Odgen (1991)
<i>Caiman crocodilus chiapasius</i>	<i>Cuniculus paca</i>	2(5)	Present study
	<i>Nasua narica</i>	5(5)	
	<i>Procyon lotor</i>	1(5)	
<i>Caiman crocodilus crocodilus</i>	<i>Cebus apella</i>	2(23)	Da Silveira et al. (2010)
	<i>Homo sapiens</i>	1(23)	
	<i>Panthera onca</i>	3(23)	
	<i>Tupinambis teguixin</i>	5(23)	
<i>Caiman yacare</i>	<i>Cerdocyon thous</i>	24(57)	Campos and Mourão (2014)
	<i>Dasybus novemcintus</i>	2(57)	
	<i>Eira barbara</i>	15(57)	
	<i>Nasua nasua</i>	19(57)	
	<i>Salvator merianae</i>	2(57)	
	<i>Sus scrofa</i>	2(57)	
<i>Crocodylus acutus</i>	<i>Caracara cheriway</i>	2(21)	Present study
	<i>Cathartes aura</i>	1(4)	Platt et al. (2014)
	<i>Coragyps atratus</i>	1(4)	
	<i>Nasua narica</i>	2(21)	Present study
	<i>Procyon lotor</i>	2(13)	
	<i>Procyon lotor</i>	1(21)	
<i>Crocodylus johnstoni</i>	Aves	-(111)	
	<i>Canis lupus dingo</i>	109(111)	
	Reptiles	-(111)	
<i>Crocodylus moreletii</i>	<i>Didelphis virginiana</i>	2(9)	Present study
	<i>Procyon lotor</i>	1(9)	
<i>Crocodylus niloticus</i>	<i>Varanus niloticus</i>	7(19)	Combrink et al. (2016)
<i>Crocodylus porosus</i>	<i>Varanus indicus</i>	2(14)	Magnusson (1982)
	<i>Varanus indicus</i>	38(38)	
<i>Melanosuchus niger</i>	<i>Didelphis marsupialis</i>	1(14)	Torralvo et al. (2017)
	<i>Homo sapiens</i>	7(111)	Da Silveira et al. (2010)
	<i>Panthera onca</i>	6(111)	
	<i>Panthera onca</i>	2(14)	Torralvo et al. (2017)
	Rodentia	1(7)	Villamarin-Jurado and Suárez (2007)
	<i>Sapajus macrocephalus</i>	6(14)	Torralvo et al. (2017)
	<i>Tupinambis teguixin</i>	10(111)	Da Silveira et al. (2010)
	<i>Tupinambis teguixin</i>	5(14)	Torralvo et al. (2017)
	<i>Cabassous unicinctus</i>	1(4)	Campos et al. (2016)
<i>Paleosuchus trigonatus</i>	<i>Dasybus novemcintus</i>	1(4)	
	<i>Eira barbara</i>	1(4)	
	<i>Nasua nasua</i>	1(4)	
	<i>Priodontes maximus</i>	1(4)	
	<i>Tupinambis teguixin</i>	2(4)	

interactions can vary as a function of the availability of habitat resources (Smith and Smith 2007), the composition of predator-prey communities (Ritchie and Johnson 2009), as well as the activity pattern of the predator (Harmsen et al. 2011).

Our literature survey showed that camera-trapping has been used as a method for monitoring crocodylian nests globally in recent years, with 30 species being identified as egg predators, in addition to humans stealing nests. For *C. acutus* and *C. moreletii* nests, the presence of domestic fauna as well as the presence of fishermen and tourists were recorded, but without predation or extraction of eggs. It is probable that nest robbing was

not recorded due to the monitoring of the nests during this study. Specifically, in REBIEN it has been identified that the stealing of *C. acutus* nests occurs in regions where nesting areas are near human settlements ( $2.8 \pm 1.19$  km) and where nests are close to water-bodies ( $4.60 \pm 2.5$  m; González-Desales et al. 2016a).

With respect to the predators we Valenzuela (2005a, 2005b) mentions that *Nasua narica* and *Procyon lotor* are omnivorous and feed mainly on fruits, seeds, invertebrates, and small vertebrates. It is also mentioned that *N. narica* occasionally feeds on turtle eggs and *P. lotor* feeds on turtle, bird, and caiman eggs. The consumption of turtle eggs by *N. narica* (Valenzuela 1998) was recorded in Cuixmala, which is an area where *Crocodylus acutus* nests have been found (Casas-Andreu 2003) and where recent predation of crocodile eggs by *N. narica* has been described (direct observations; Cuapio 2015). With respect to *Caracara cheriway*, it is considered to be an opportunist species (Morrison et al. 2008) that feeds on invertebrates, fish, amphibians, reptiles, and birds (Pérez-Estrada and Rodríguez-Estrella 2016). The consumption of reptile eggs by this species has not been recorded previously. The diet of *Cuniculus paca* consists of stalks, leaves, seeds, and fruits (Ortega and Arita 2005). *Didelphis virginiana* is an opportunist omnivore species that feeds on insects, vertebrates, carrion, fruits, and seeds (Zarza and Medellín 2005). The results obtained from the present study, in addition to identifying egg predators of Mexican crocodylians, also contribute to the knowledge of the dietary habits of these predators.

This is the first study in Mexico where the interactions between fauna and crocodylian nests have been identified, giving evidence that the construction of the nests generally favours the activities of other species without causing damage to the survival of the crocodylians (commensalism), except for predation. An example of commensalism would be sand baths as they help to clean skin, feathers, or fur, in addition to eliminating ectoparasites and aiding in thermoregulation (Barandongo et al. 2018). It has also been recorded in *A. mississippiensis* that commensalism is the most frequent interaction at nesting sites (Merchant et al. 2014). In other countries, parasitism has also been documented as a type of interaction between *Iguana iguana* and *C. acutus* nests (Dugan et al. 1981). This interaction was not documented during the present study. In other cases, commensalism favours the crocodylian, which is the case with nests that are constructed in termite mounds where their temperature assists in the incubation of *Paleosuchus trigonatus* eggs (Magnusson et al. 1985). With respect to the most frequent activity (free transit), while this is not necessarily an interaction that is specific to nests, we suggest that this is a result of the elements that make up the nesting sites which offer vertebrate species refuge sites (hollow logs, rocks, human structures), perching sites (tree branches), or food (fruit trees), as moving from one site to another would result in eventually crossing over a nest, making this an occasional interaction (cooperation).

The results suggest that anthropogenic disturbance does not appear to have an effect on the association between the crocodylian nesting sites and wild/exotic fauna in the areas of study. LILUS is the area with the most anthropogenic disturbance and yet no predation by exotic fauna, nor greater number of nests lost, was recorded in this or any other monitored area. It has been documented that human disturbance affects nesting sites (Casas-Andreu 2003), but it does not appear have an effect on ecological interactions with wild or exotic fauna. A low percentage of predation by exotic fauna has also been observed with other species of crocodylians previously.

Additionally, we identified a greater number of predator species at sites where there were more vertebrate species, supporting the prediction of Stephens et al. (2009), which states that an interaction between species can be attributed to the high coincidence of their spatial distributions. This is to say, the greater the co-occurrence, the greater the probability of an interaction taking place. The non-linear model of this analysis also indicated that there was a limit to the number of predators, even as more species were recorded. In addition, we found the number of nests preyed upon appears to be a function of the size of the crocodilian, indicating that the bigger the crocodilian is, the number of nests preyed upon will be less. We found this pattern is repeated on local and global levels. Considering the sympatric crocodilian species at REBIEN, the number of nests preyed upon (47.4%) was greater with the species of the smallest size (*C. c. chiapasius*) in comparison with the nests preyed upon (5.8%) of the species of the greatest size (*C. acutus*; González-Desales et al. 2016a, 2016b).

Overall, our results indicate that the predation of crocodilian eggs is dependent on: a) ecological factors, such as the richness of vertebrate species at the nesting sites, and b) biological characteristics, such as crocodilian size, the life stage in which they find themselves (Somaweera et al. 2013), and parental care (Ferguson 1985). Additionally, mammalian mesocarnivore species (*Didelphis virginiana*, *Procyon lotor* and *Nasua narica*) with large distributions and with generalist and opportunist diets are principally responsible for the predation of the eggs of Mexican crocodilians.

## Acknowledgements

To the people of Mexico whose taxes are used to finance research projects through the different institutions from which some of the authors of the present work come. The land owners of Isla La Concepción for lending their facilities since 2014, and all the authors thank the local people of the study sites that allowed us to place camera-traps. Special thanks to Dan Navarro for help with translation and revising English grammar.

## Disclosure statement

The authors declare that they have no conflict of interest.

## Funding

The primary author thanks the patrons of the Student Research Assistance Scheme for financing part of the field work through the IUCN-CSG (Project 14/3), the UAEMéx. for financing Project 3841/2014/CIA

## ORCID

Martha M. Zarco-González  <http://orcid.org/0000-0003-4217-8272>

Octavio Monroy-Vilchis  <http://orcid.org/0000-0003-3159-6014>

## References

- Barandongo ZR, Mfune JKE, Turner WC. 2018. Dust-bathing behaviors of african herbivores and the potential risk of inhalational anthrax. *Journal of Wildlife Diseases*. 54(1):34–44. doi:10.7589/2017-04-069.
- Barrios G, Cremieux J. 2018. Protocolo de rancheo para cocodrilo de pantano (*Crocodylus moreletii*) en México. México: Comisión Nacional para el Conocimiento y Uso de la Biodiversidad.
- Bocourt F. 1876. Note sur quelques reptiles de l'Isthme de Tehuantepec (Mexique) donnés par M. Sumichrast au museum. *J De Zool*. 5(5–6):386–411.
- Campos Z. 1993. Effect of habitat on survival of eggs and sex ratio of hatchlings of *Caiman crocodilus yacare* in the Pantanal, Brazil. *Journal of Herpetology*. 27(2):127–132. doi:10.2307/1564927.
- Campos Z, Mourão G. 2014. Camera traps capture images of predators of *Caiman crocodilus yacare* eggs (Reptilia: Crocodylia) in Brazil's Pantanal wetlands. *Journal of Natural History*. 49(15–16):977–982. doi:10.1080/00222933.2014.930757.
- Campos Z, Muniz F, Desbiez ALJ, Magnusson E. 2016. Predation on eggs of Schneider's dwarf caiman, *Paleosuchus trigonatus* (Schneider, 1807), by armadillos and other predators. *J N His*. 50(25–26):1543–1548. doi:10.1080/00222933.2016.1155782.
- Carrera-Treviño R, Astudillo-Sánchez CC, Garza-Torres HA, Martínez-García L, Soria-Díaz L. 2018. Interacciones temporales y espaciales de mesocarnívoros simpátricos en una Reserva de la Biosfera: ¿coexistencia o competencia? *Revista de Biología Tropical*. 66(3):996–1008. doi:10.15517/rbt.v66i3.30418.
- Casas-Andreu G. 2003. Ecología de la anidación de *Crocodylus acutus* (Reptilia: Crocodylidae) en la desembocadura del río Cuitzmalá, Jalisco, México. *Acta Zool Mex Nueva Ser*. 89:111–128.
- Casas-Andreu G, Barrios G. 2003. Hábitos alimenticios de *Crocodylus acutus* (Reptilia: Crocodylidae) determinados por el análisis de sus excretas en la costa de Jalisco, México. *An Inst Biol Univ Nac Auton Mex Ser Zool*. 74(1):35–42.
- Ceballos G, Oliva G. 2005. Los mamíferos silvestres de México. 1st ed. México: Comisión nacional para el conocimiento y uso de la biodiversidad. Fondo de Cultura y Económica.
- Charruau P, Hénaut Y. 2012. Nest attendance and hatchling care in wild American crocodiles (*Crocodylus acutus*) in Quintana Roo, Mexico. *Animal Biology*. 62(1):29–51. doi:10.1163/157075511X597629.
- Cintra R. 1988. Nesting ecology of the Paraguayan caiman (*Caiman yacare*) in the Brazilian Pantanal. *Journal of Herpetology*. 22(2):219–222. doi:10.2307/1564000.
- Combrink X, Warner JK, Downs CT. 2016. Nest predation and maternal care in the Nile crocodile (*Crocodylus niloticus*) at Lake St Lucia, South Africa. *Behavioural Processes*. 133:31–36. doi:10.1016/j.beproc.2016.10.014.
- Cuapio F. 2015. Temperaturas de incubación de nidos de *Crocodylus acutus*, su relación con variables ambientales y su efecto en el periodo de incubación, éxito de eclosión y proporción sexual [MSc thesis]. Universidad Nacional Autónoma de México.
- Cupul-Magaña FG, McCann F, Escobedo-Galván AH. 2015. Observaciones del consumo de presas en el cocodrilo americano (*Crocodylus acutus* Cuvier, 1807): registro fotográfico. *Quehacer Científico en Chiapas*. 10(2):11–15.
- Cuvier G. 1807. Sur les différentes especes de crocodiles vivans et sur leurs caracteres distinctifs. *Ann Natl Mus Hist Nat*. 10:8–86.
- Da Silveira R, Ramalho EE, Thorbjarnarson JB, Magnusson WE. 2010. Depredation by jaguar on caimans and importance of reptiles in the diet of jaguar. *J Herpetol*. 44(3):418–424.
- Del Val E, Boege K. 2012. Ecología y evolución de las interacciones bióticas. México: Universidad Nacional Autónoma de México-Fondo de Cultura Económica.
- Dugan BA, Rand AS, Burghardt GM, Bock BC. 1981. Interactions between nesting crocodiles and iguanas. *J Herpetol*. 15(4):409–414.
- Duméril A, Bibron G. 1851. Sauriens ou Lézards. In: Duméril MC, Duméril A editors. *Catalogue méthodique de la collection des reptiles*. Muséum d'Histoire Naturelle de Paris. Gide et Baudry, Libraires-Éditeurs; p. 26–29.

- Ferguson MWJ. 1985. Reproductive biology and embryology of the crocodylians. In: Gans C, Billet F, Maderson PFA, editors. *Biology of the Reptilia*. New York: Development A. John Wiley and Sons; p. 329–500.
- García E. 1988. Modificaciones al sistema de clasificación climática de Köpen, para adaptarlo a las condiciones de la República Mexicana. México: Offset Larios S. A.
- García-Grajales J, Buenrostro-Silva A. 2015. Áreas de interacción entre humanos y cocodrilos (*Crocodylus acutus* Cuvier) en Chacahua, Oaxaca, México. *Agroproductividad*. 8(5):25–33.
- González-Desales GA, Monroy-Vilchis O, Charruau P, Zarco-González MM. 2016b. Aspectos ecológicos de la anidación de *Caiman crocodylus chiapasius* (Bocourt, 1876) en la reserva de la biosfera La Encrucijada, México. *Anim Biodivers Conserv*. 39(2):155–160.
- González-Desales GA, Monroy-Vilchis O, Zarco-González MM, Charruau P. 2016a. Nesting ecology of the American crocodile in La Encrucijada biosphere reserve, Mexico. *Amphib-Reptilia*. 37:261–271.
- Harmsen BJ, Foster RJ, Silver SC, Ostro LET, Doncaster CP. 2011. Jaguar and puma activity patterns in relation to their main prey. *Mamm Biol*. 76(3):320–324.
- Howell SNG, Webb S. 1995. *A guide to the birds of Mexico and northern Central America*. New York: Oxford University Press.
- Hunt RH, Odgen JJ. 1991. Selected aspects of the nesting ecology of the American alligator in the Okefenokee Swamp. *J Herpetol*. 25(4):448–453.
- López-Luna MA, Hidalgo-Mihart MG, Aguirre-León G. 2011. Descripción de los nidos del cocodrilo de pantano (*Crocodylus moreletii*) en un paisaje urbanizado en el sureste de México. *Acta Zool Mex Nueva Ser*. 27(1):1–16.
- Magnusson WE. 1982. Mortality of eggs of the crocodile *Crocodylus porosus* in Northern Australia. *J Herpetol*. 16(2):121–130.
- Magnusson WE, Lima AP, Sampaio RM. 1985. Sources of heat for nests of *Paleosuchus trigonatus* and a review of crocodylians nest temperatures. *J Herpetol*. 19(2):199–207.
- Mazzotti FJ, McEacher M, Rochford M, Reed RN, Eckles JK, Vinci J, Edwards J, Wasilewski J. 2015. *Tupinambis merianae* as nest predators of crocodylians and turtles in Florida, USA. *Biol Invasions*. 17:47–50.
- Meek PD, Ballard GA, Schaefer M, Williams W, Falzon G. 2014. Camera traps can be heard and seen by animals. *PLoS one*. 10:110832.
- Merchant M, Murray CM, Cooper A. 2014. American alligator nest as microhabitat for a diversity of vertebrates. *Herpetol Rev*. 45(2):201–203.
- Monroy-Vilchis O, Rodríguez-Soto C, Zarco-González MM, Urios V. 2009. Cougar and jaguar habitat use and activity patterns in central Mexico. *Anim Biol*. 59:145–157.
- Morrison JL, Pias KE, Abrams J, Gottlieb GW, Deyrup M, McMillan M. 2008. Invertebrate diet of breeding and nonbreeding crested caracaras (*Caracara cheriway*) in Florida. *J Raptor Res*. 42(1):38–47.
- National Geographic Society. 2002. *Field guide to the birds of North America*. 4th ed. Washington: National Geographic Society.
- Ortega RJ, Arita HT. 2005. *Cuniculus paca* (Linnaeus, 1776). In: Ceballos G, Oliva G, editors. *Los mamíferos silvestres de México*. México: Comisión Nacional para el Conocimiento y Uso de la Biodiversidad. Fondo de Cultura y Economía; p. 815–816.
- Pérez-Estrada CJ, Rodríguez-Estrella R. 2016. *Caracara cheriway* predation on migratory waterbirds, *Egretta thula* and *Podiceps nigricollis*, in southern Baja California peninsula. *Acta Zool Mex Nueva Ser*. 32(1):129–131.
- Platt SG, Charruau P, Rainwater TR. 2014. Scavenging of crocodile eggs by vultures (*Cathartes aura* and *Coragyps atratus*) in Quintana Roo, Mexico. *Bull Texas Ornithol Soc*. 47(1–2):37–40.
- Platt SG, Rainwater TR, Finger AG, Thorbjarnarson JB, Anderson TA, McMurry ST. 2006. Food habits, ontogenetic dietary partitioning and observations of foraging behavior of Morelet's crocodile (*Crocodylus moreletii*) in northern Belize. *Herpetol J*. 16:281–290.
- Ritchie EG, Johnson CN. 2009. Predator interactions, mesopredator release and biodiversity conservation. *Ecol Lett*. 12:982–998.

- Rovero F, Tobler M, Sanderson J. 2010. Camera trapping for inventorying terrestrial vertebrates. In: Eymann J, Degreef J, Häuser CL, Monje JC, Samyn Y, VandenSpiegel D, editors. Manual on field recording techniques and protocols for All Taxa Biodiversity Inventories and Monitoring. United Kingdom: Abc Taxa; p. 100–128.
- Rowcliffe JM, Carbone C. 2008. Surveys using camera traps: are we looking to a brighter future? *Anim Conserv.* 11:185–186.
- Sánchez-Herrera O, López-Segurajáuregui G, García-Naranjo, Ortiz, de, la Huerta A, Benítez-Díaz H. 2011. Programa de Monitoreo del Cocodrilo de Pantano (*Crocodylus moreletii*) México-Belice-Guatemala. México: Comisión Nacional para el Conocimiento y Uso de la Biodiversidad.
- Smith TM, Smith RL. 2007. *Ecología*. 6th ed. España: Pearson Educación S. A; p. 299–326.
- Somaweera R, Brien M, Shine R. 2013. The role of predation in shaping crocodylian natural history. *Herpetol Monogr.* 27:23–51.
- Stephens CR, Heau JG, González C, Ibarra-Cerdeña CN, Sánchez-Cordero V, González-Salazar C. 2009. Using biotic interaction networks for prediction in biodiversity and emerging diseases. *PLoS ONE.* 4(5):e5725.
- Sutton DB, Harmon NP. 2007. *Fundamentos de Ecología*. México: Limusa S. A. de C.V; p. 187–220.
- Torralvo K, Botero-Arias R, Magnusson WE. 2017. Temporal variation in black-caiman-nest predation in varzea of central Brazilian amazonia. *PLoS one.* 12(8):e0183476.
- Valenzuela D. 1998. Natural history of the White-nosed coati, *Nasua narica*, in a tropical dry forest of western Mexico. *Revista Mexicana de Mastozoología.* 3:26–44.
- Valenzuela D. 2005a. *Nasua narica* (Linnaeus, 1776). In: Ceballos G, Oliva G, editors. Los mamíferos silvestres de México. México: Comisión Nacional para el Conocimiento y Uso de la Biodiversidad. Fondo de Cultura y Economía; p. 411–413.
- Valenzuela D. 2005b. *Procyon lotor* (Linnaeus, 1758). In: Ceballos G, Oliva G, editors. Los mamíferos silvestres de México. México: Comisión Nacional para el Conocimiento y Uso de la Biodiversidad. Fondo de Cultura y Economía; p. 415–417.
- Villamarín-Jurado F, Suárez E. 2007. Nesting of the black caiman (*Melanosuchus niger*) in Northeastern Ecuador. *J Herpetol.* 41(1):164–167.
- Zarco-González MM, Monroy-Vilchis O, Alaníz J. 2013. Spatial model of livestock predation by jaguar and puma in Mexico: conservation planning. *Biol Conserv.* 159:80–87.
- Zarza H, Medellín RA. 2005. *Didelphis virginiana* (Kerr 1792). In: Ceballos G, Oliva G, editors. Los mamíferos silvestres de México. México: Comisión Nacional para el Conocimiento y Uso de la Biodiversidad. Fondo de Cultura y Economía; p. 108–110.