

Universidad Autónoma del Estado de México

Facultad de Artes

Maestría en Estudios Visuales

UA: Estudios visuales

Proyectos curatoriales: Edén

elaborado por: Angélica Marengla León Alvarez

fecha de elaboración: septiembre de 2016

Objetivo de este material audiovisual:

Analizar los planteamientos curatoriales que rigen el sistema artístico contemporáneo.

Contenidos temáticos que apoya el material:

UNIDAD III.-

El arte, el cine y el mercado como productores de ámbitos imaginarios

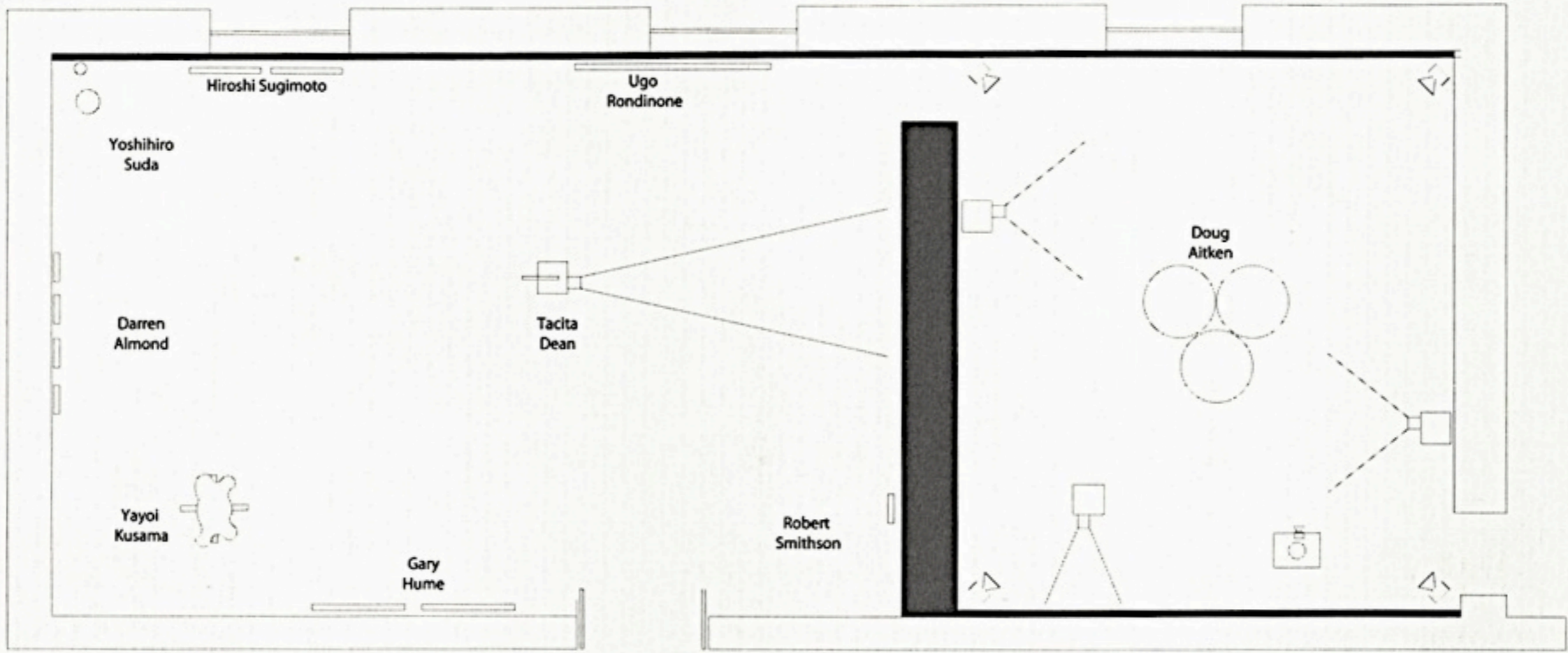
PROYECTOS CURATORIALES

EDÉN

Colección Jumex



EDÉN

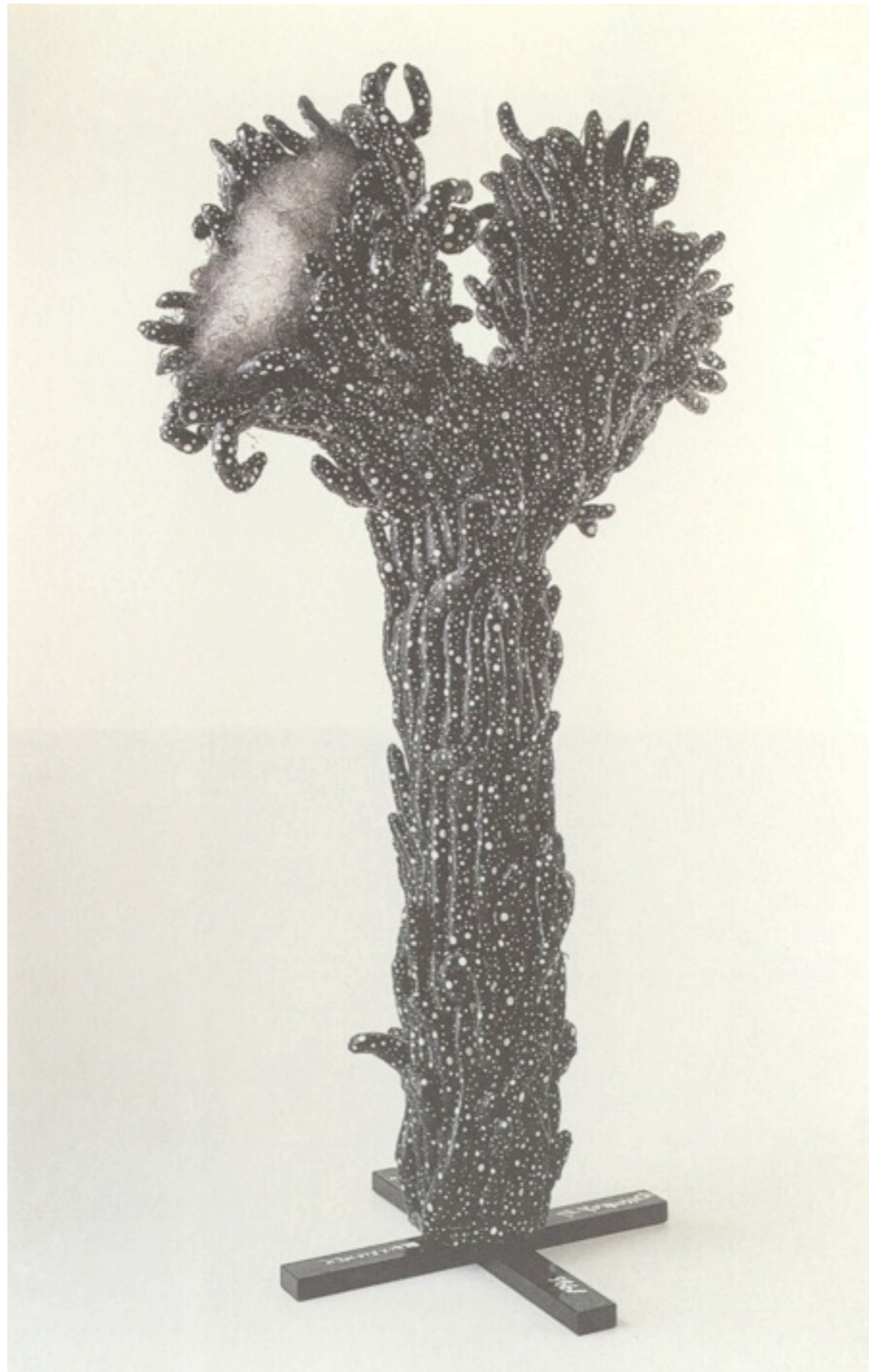




Tacita Dean



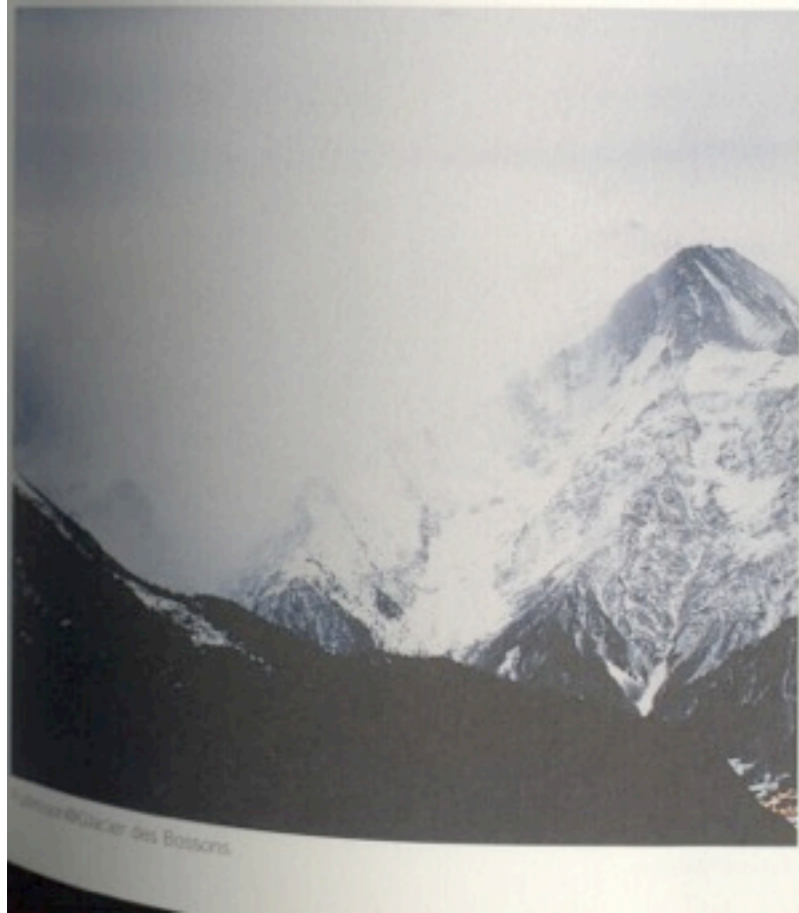




Yayoi Kusama



Art installation by [unreadable] at [unreadable] gallery.



Fullmoon@Arondine



Fullmoon@St. Martin

Darren Almond



Fullmoon@Luzier

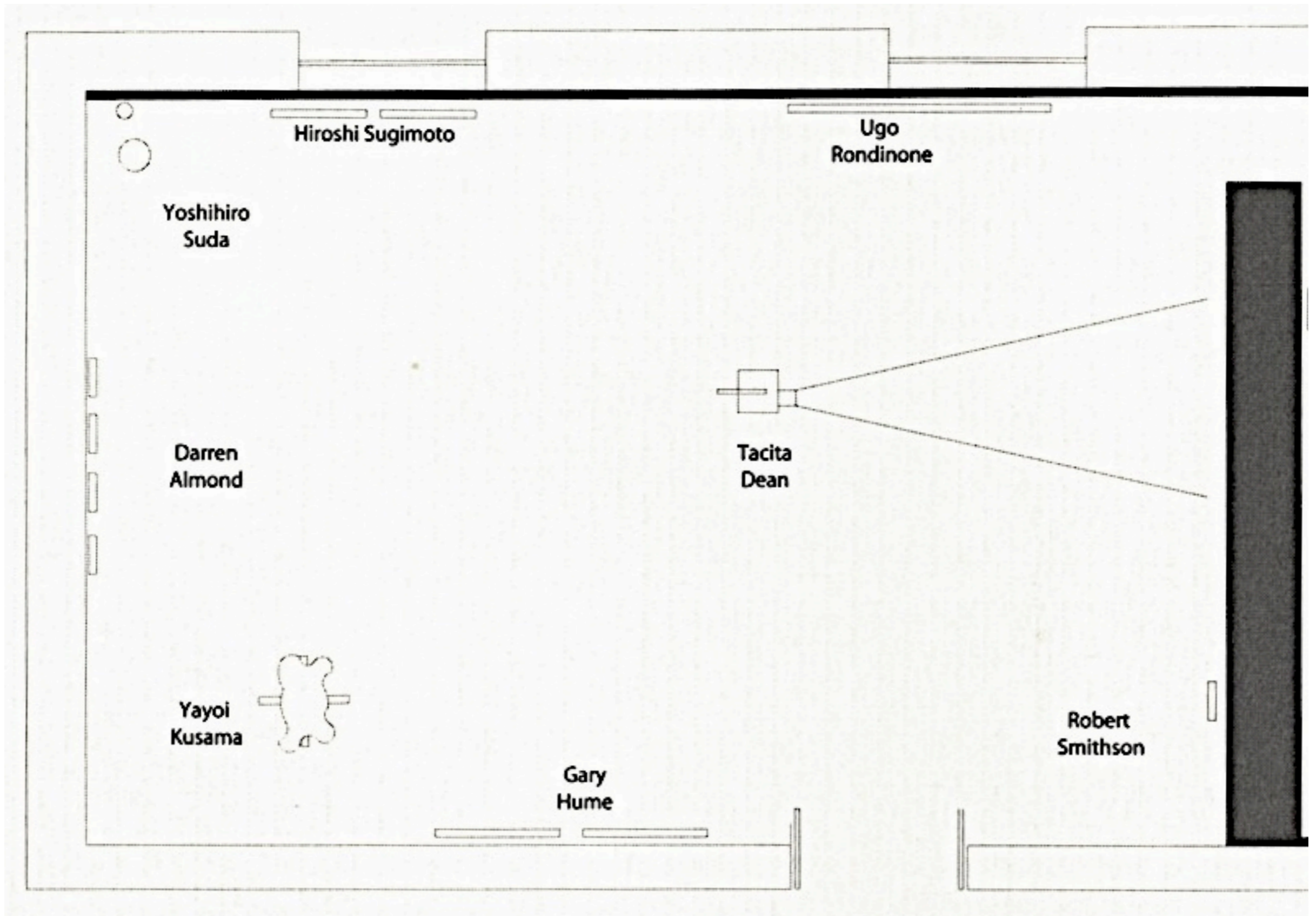


Fullmoon@LDale



Fullmoon@Viry

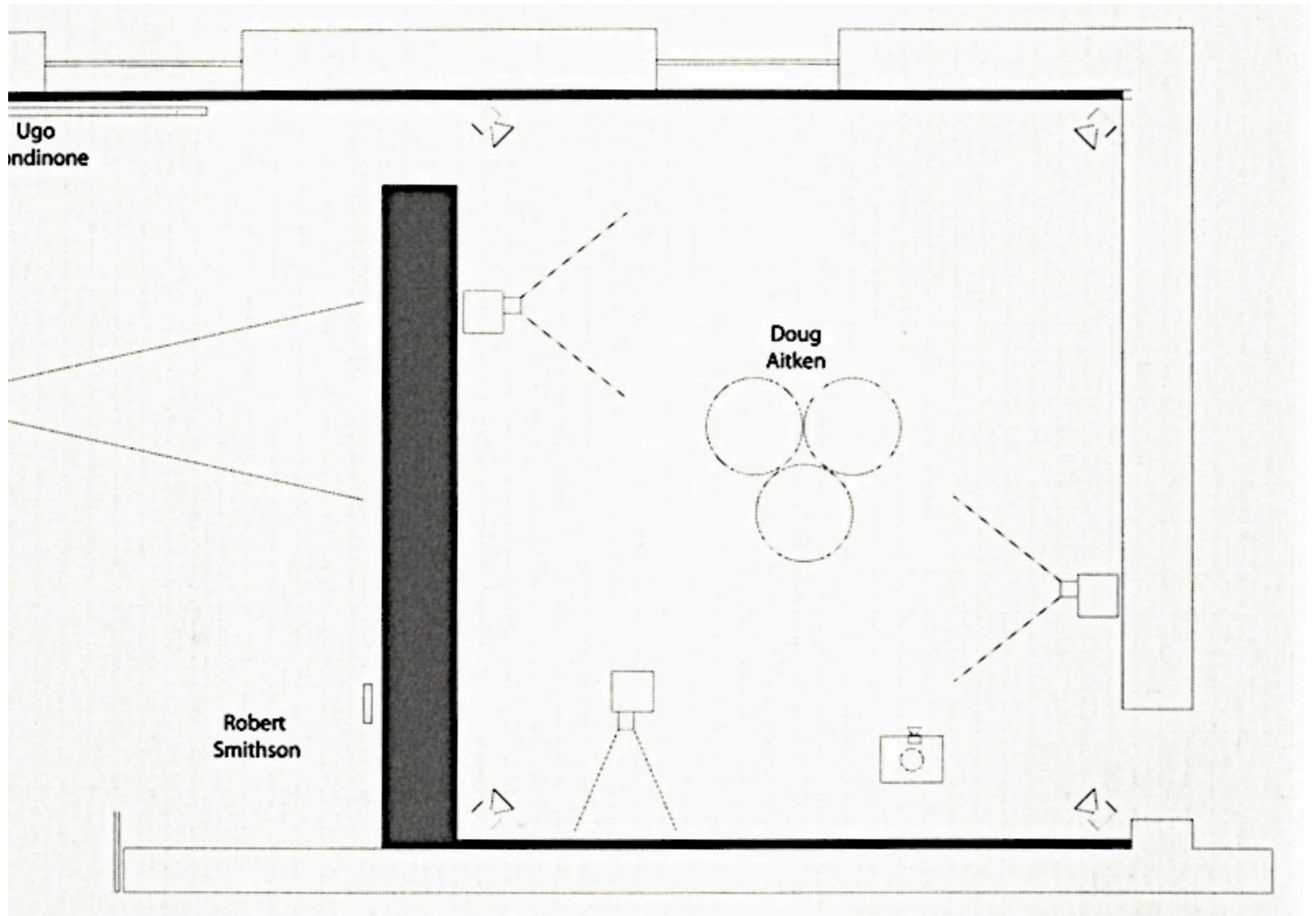
Darren Almond

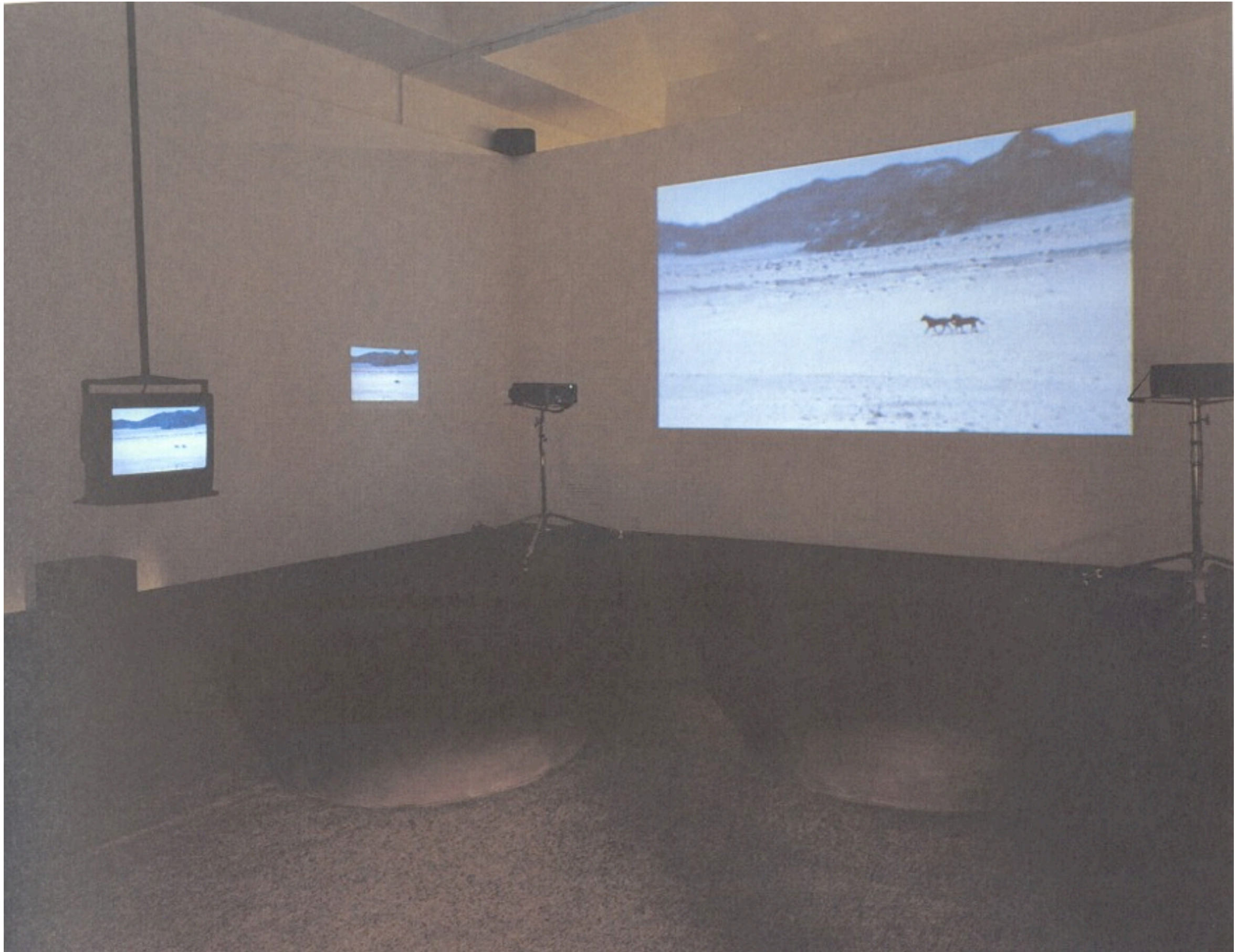


Ugo
Indinone

Doug
Aitken

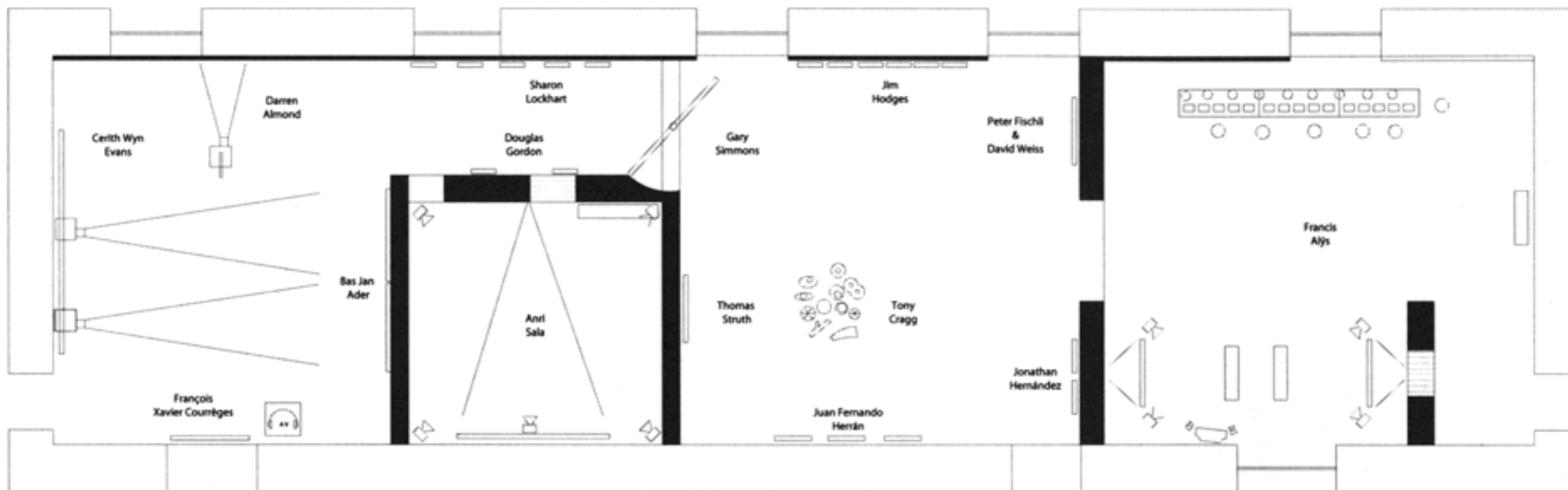
Robert
Smithson

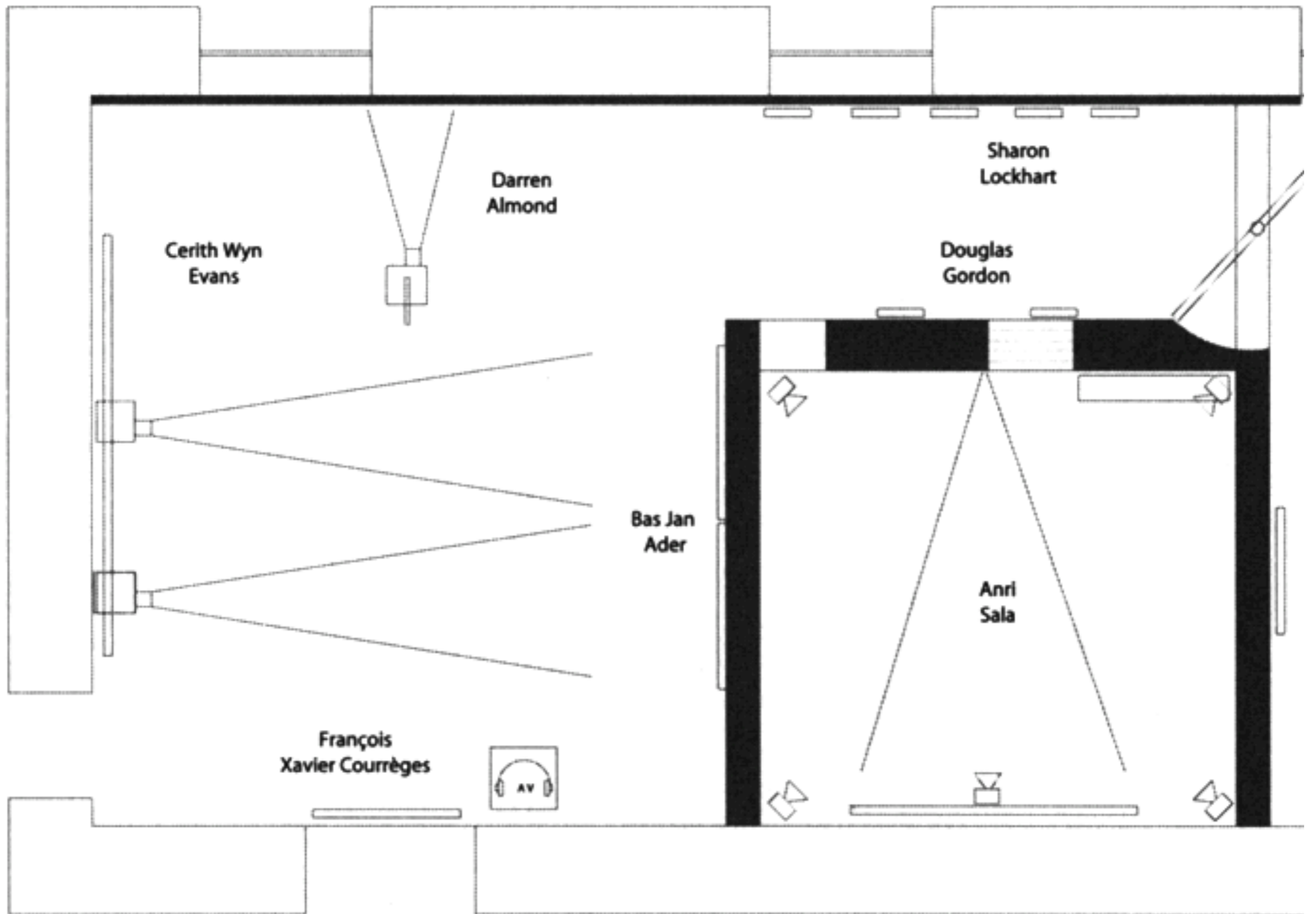




Doug Atkien



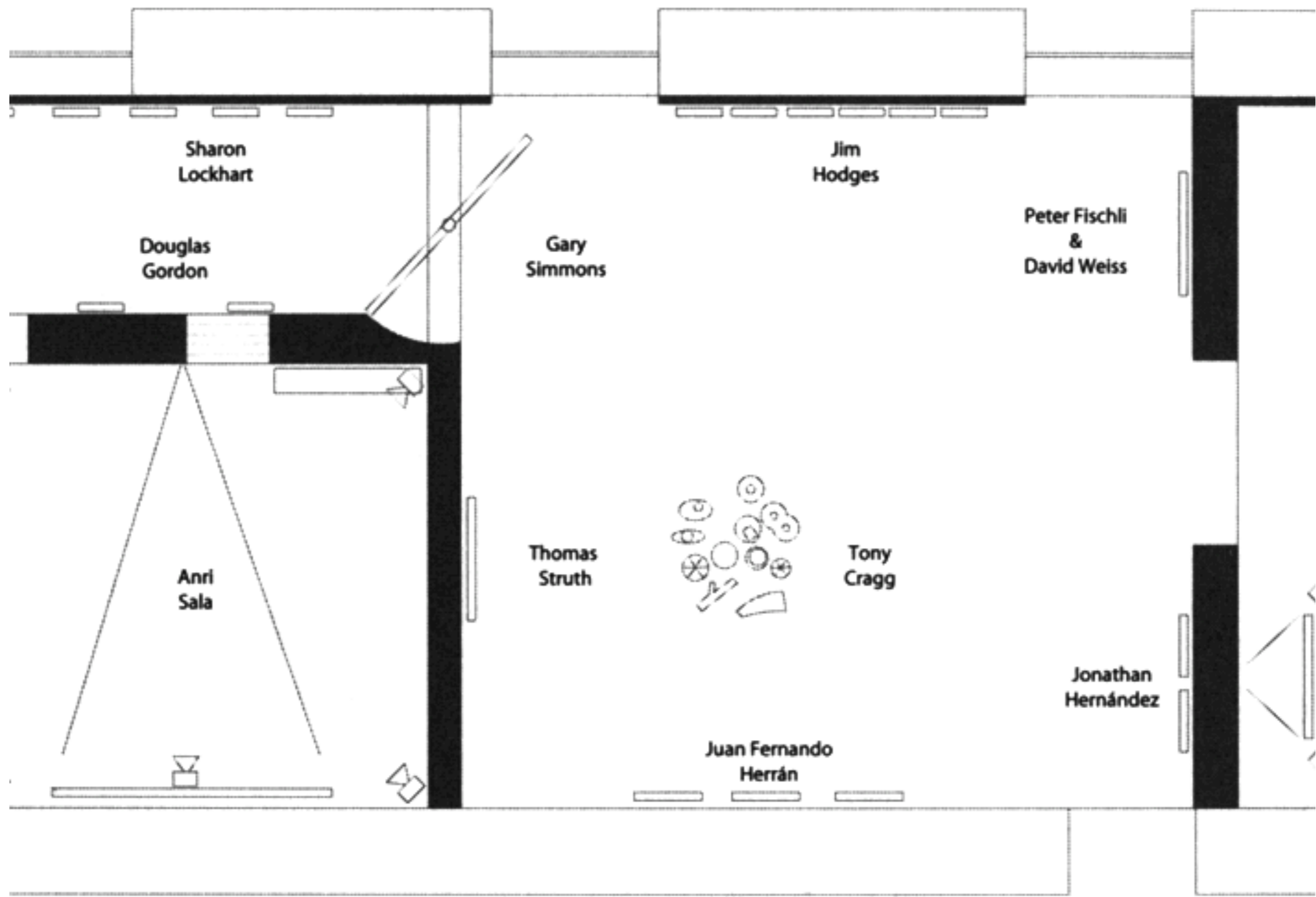




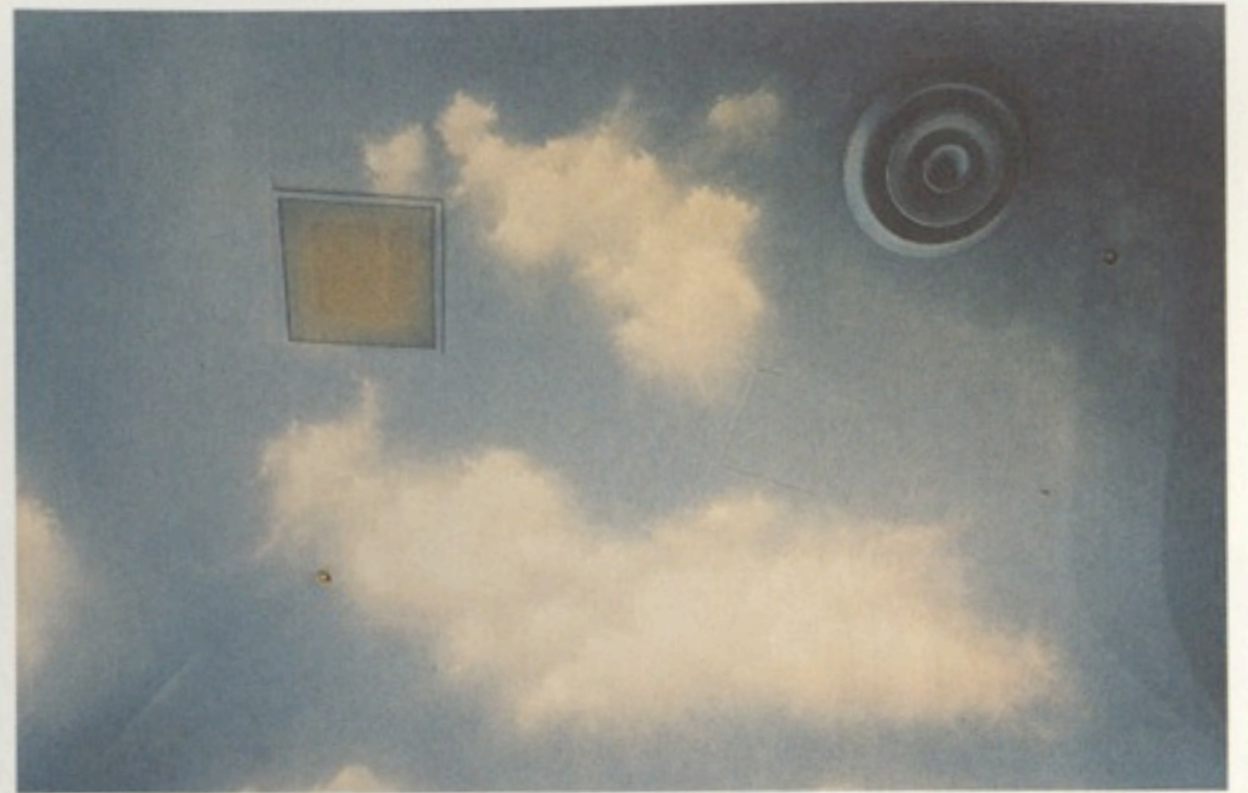


Bas Jan Ader

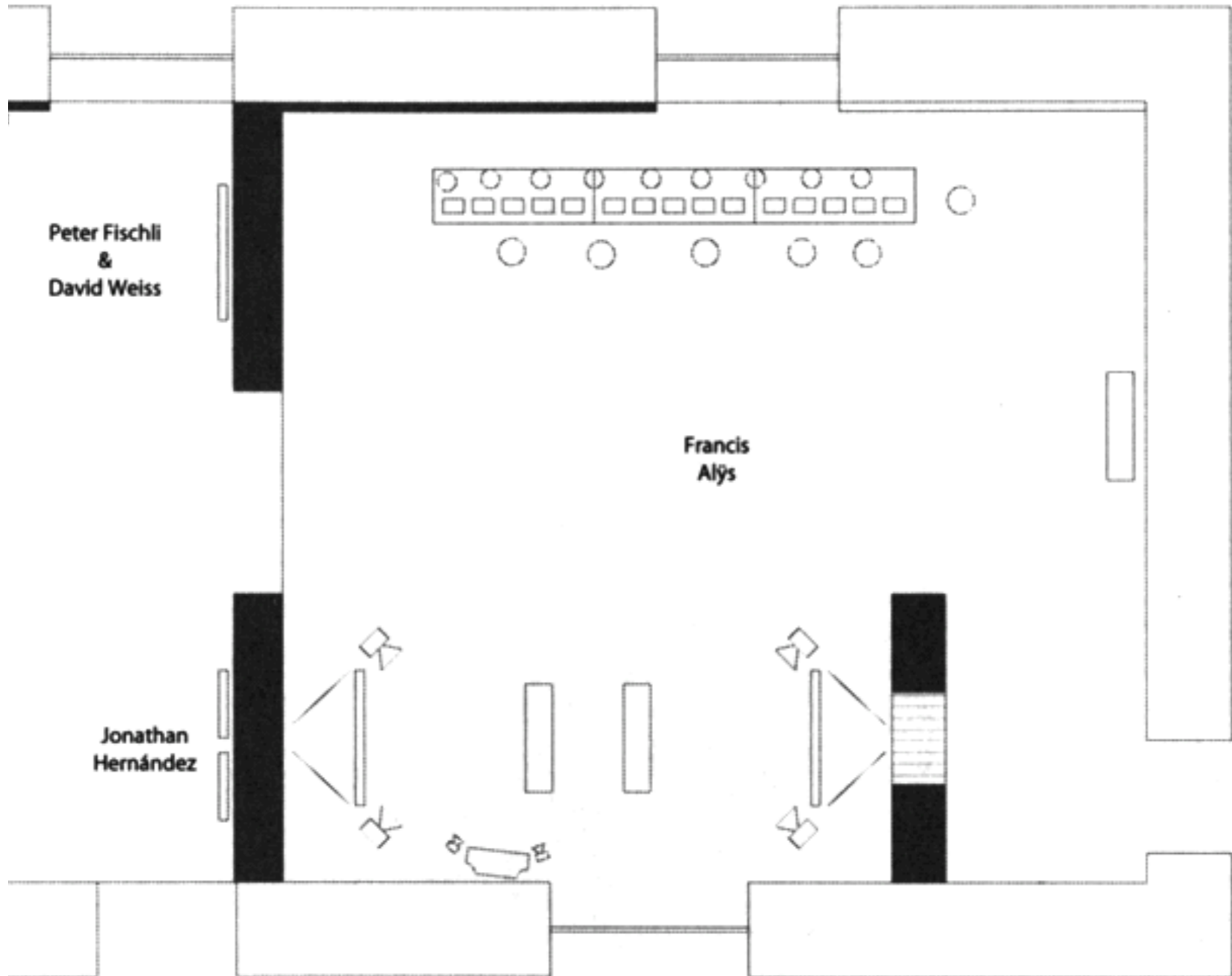








Jonathan Hernández



Peter Fischli
&
David Weiss

Francis
Alÿs

Jonathan
Hernández

Cuando la fe
mueve montañas
Lima, abril 2002

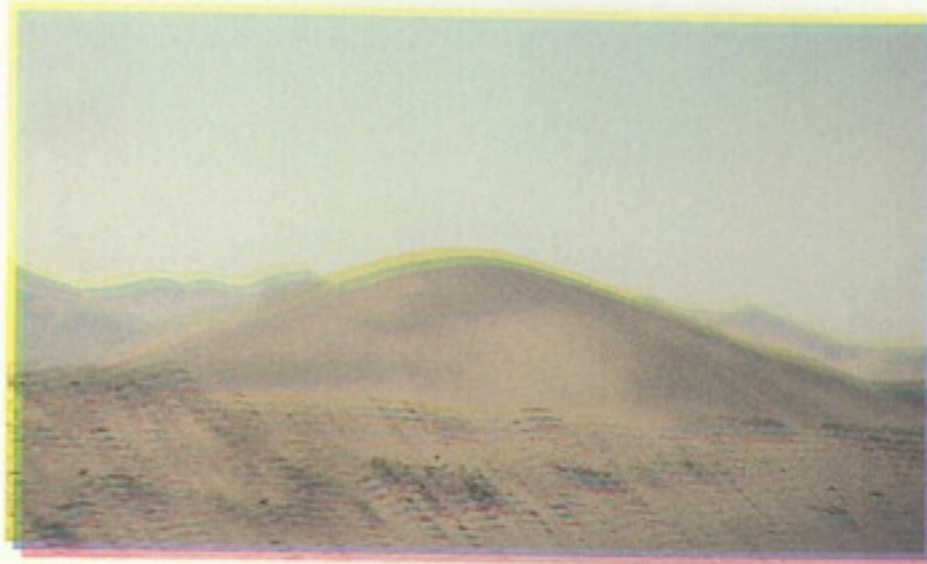


Francis Alys





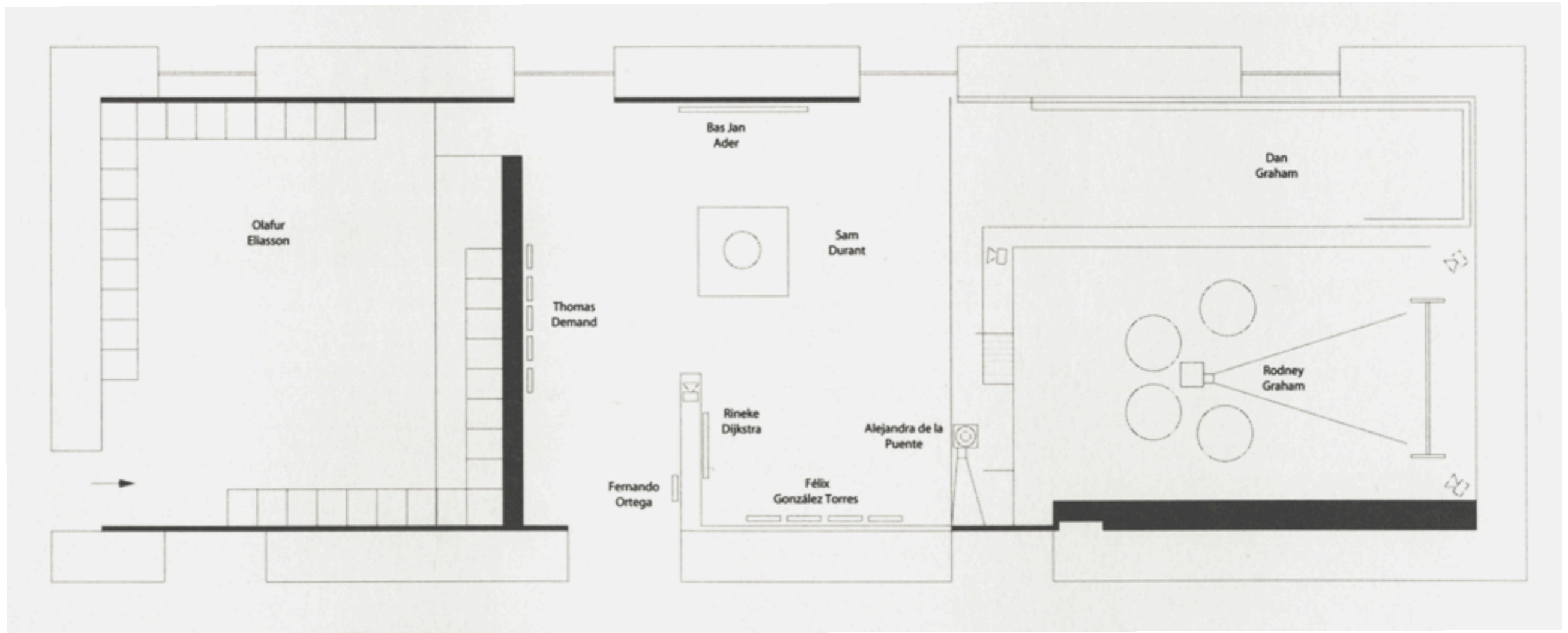


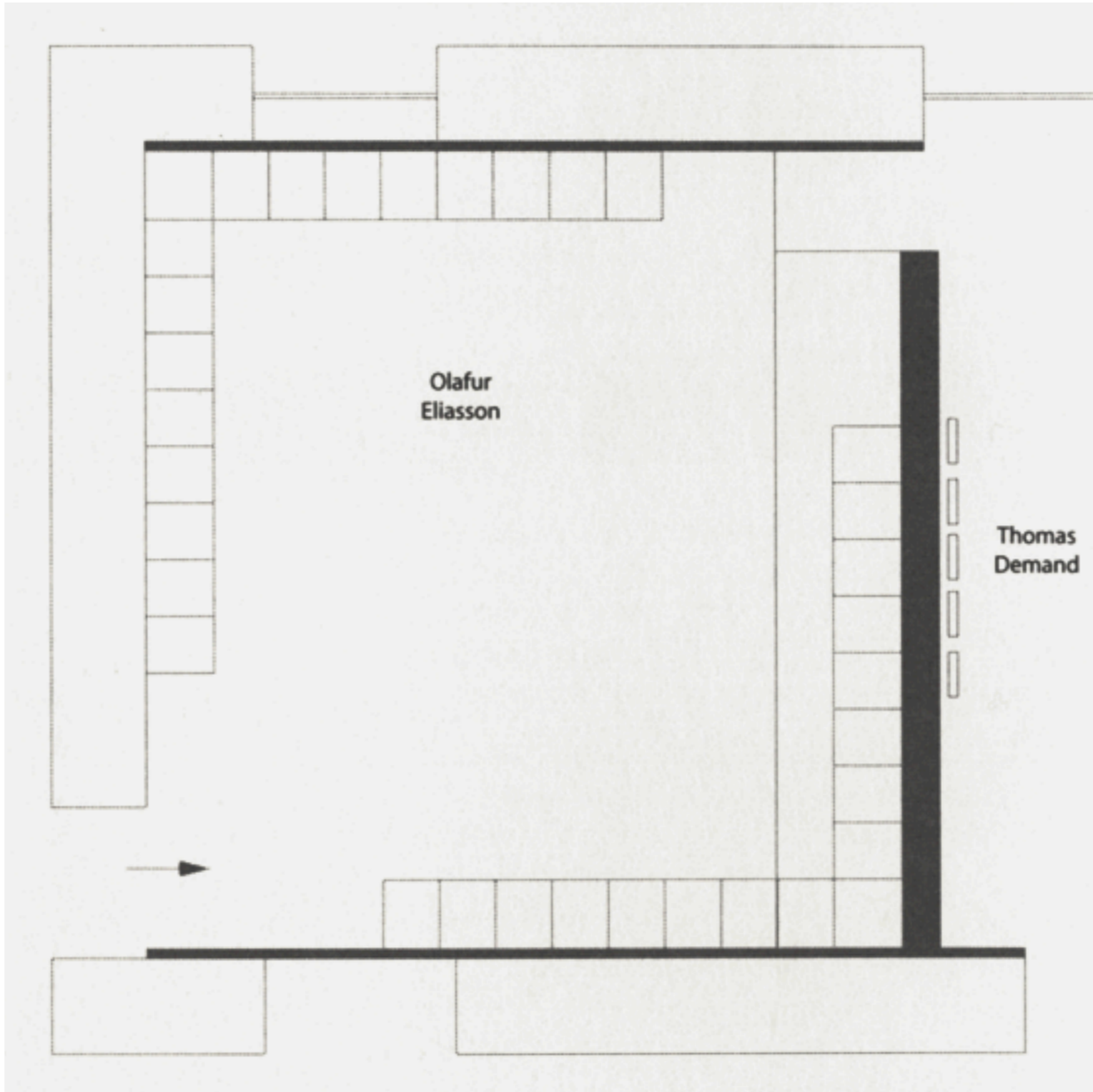


1000 volunteers will be equipped with shovels and asked to form a single line in order to displace by 10 cm a 500 m long sand dune from its original position.
1000 personas serán convocadas para formar una línea con el fin de mover con palas una duna de 500 m de diámetro a 10 cm de su sitio original.



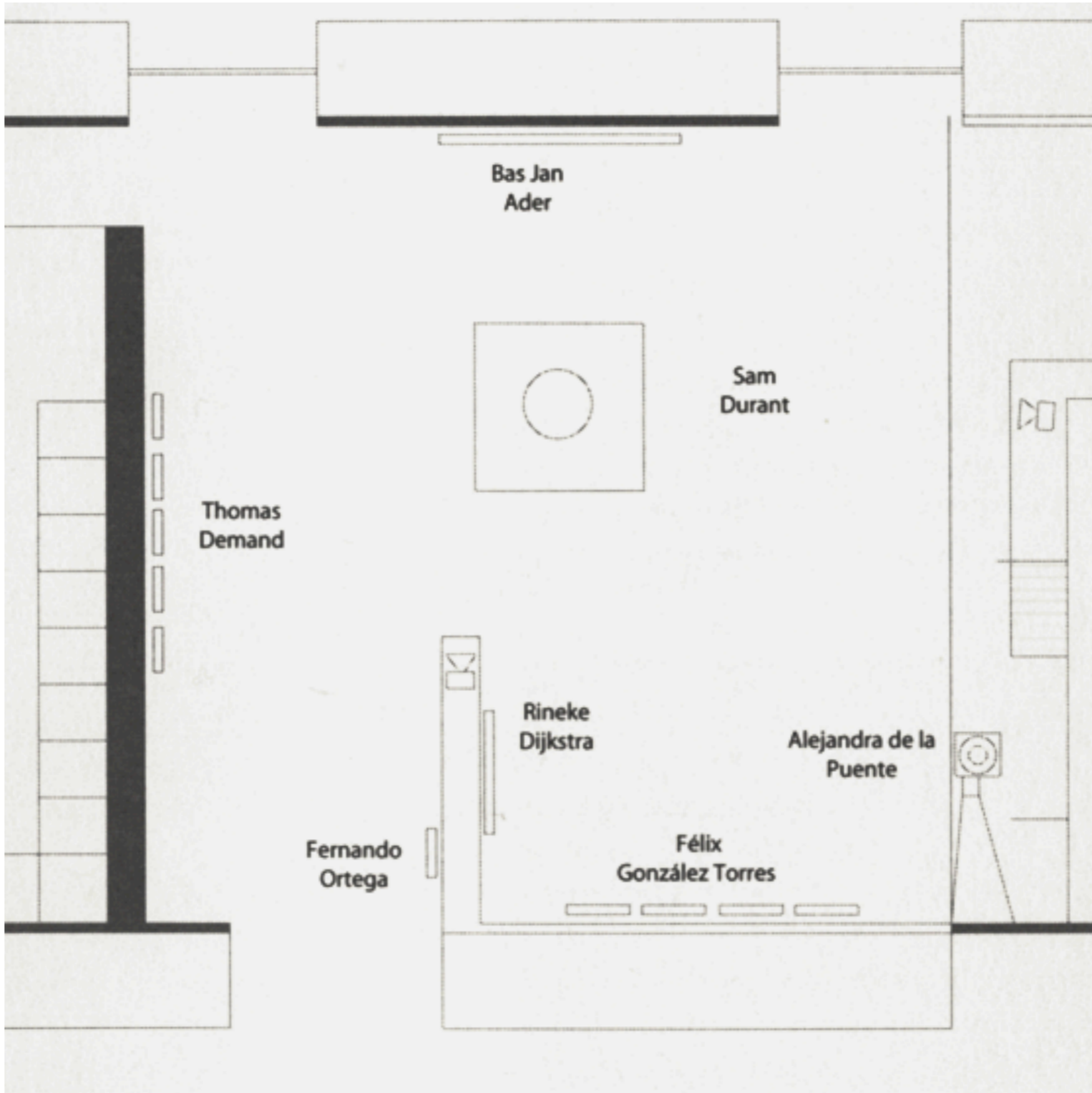
On April 11, 2002, 500 volunteers were equipped with shovels and asked to form a single line in order to displace by 10 cm a 500 m long sand dune from its original position.
El 11 de abril del 2002, 500 personas fueron convocadas para formar una línea con el fin de mover con palas una duna de 500 m de diámetro a 10 cm de su sitio original.



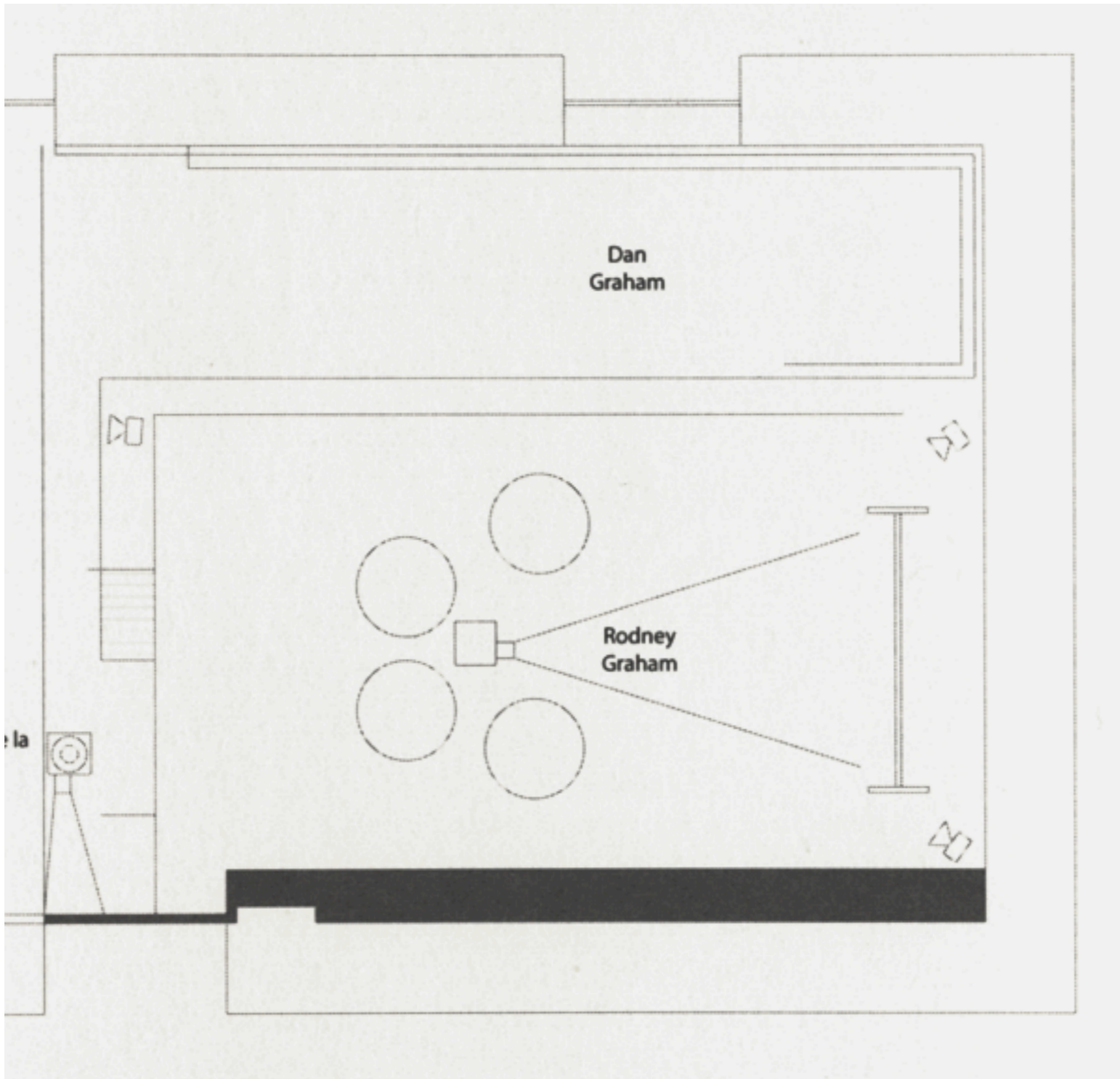




Olafur Eliasson

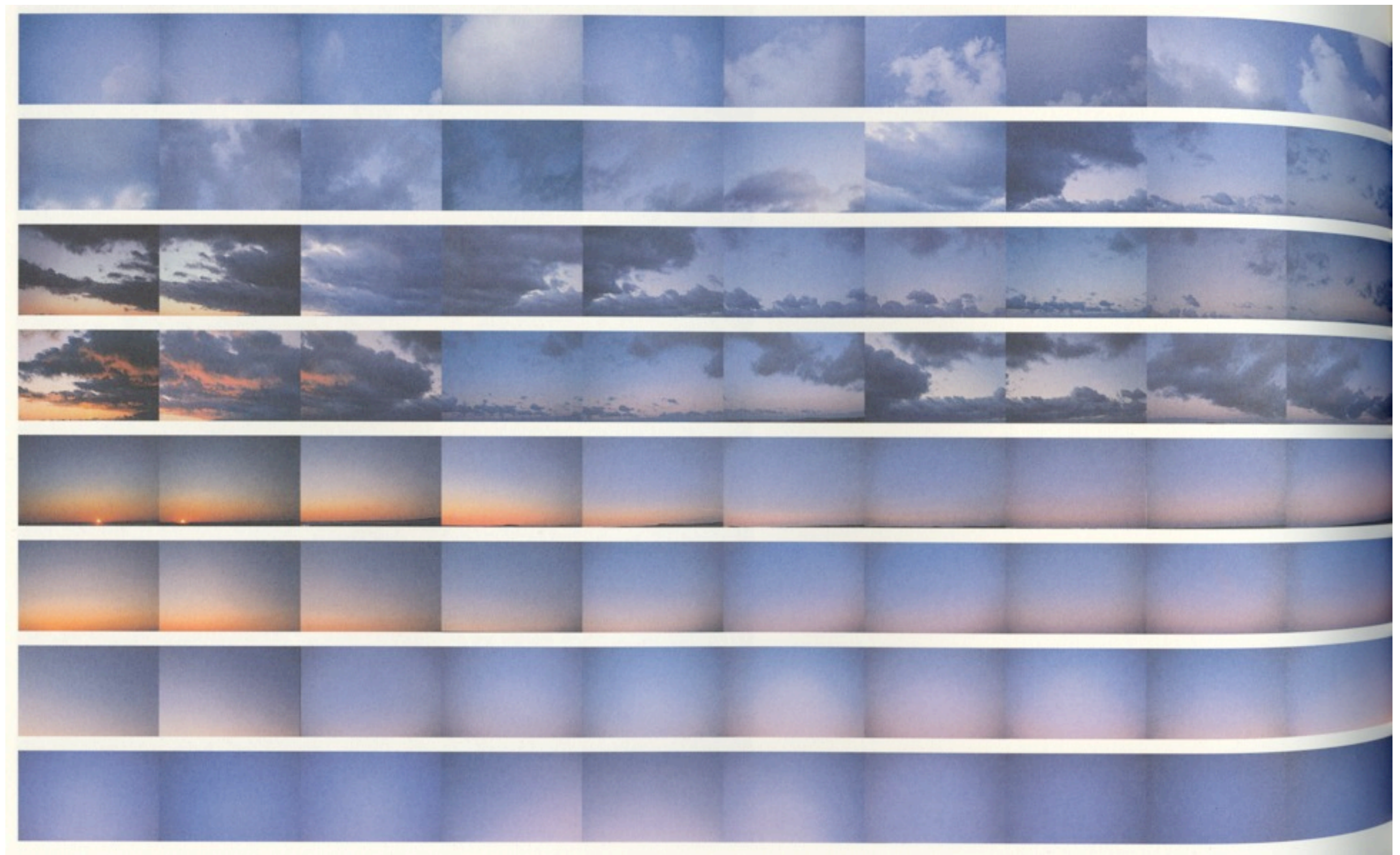


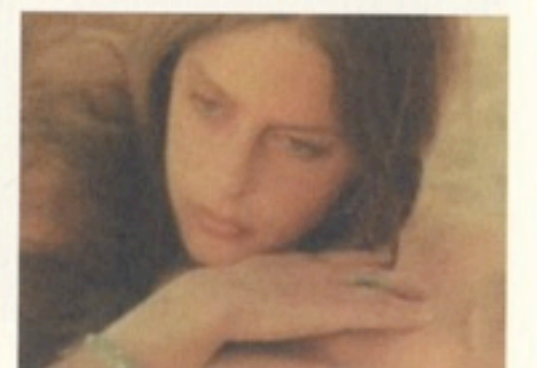






Dan Graham





EREN 1 133

Rodney Graham